

BNIP-2 rabbit pAb

Cat No.:ES7251

For research use only

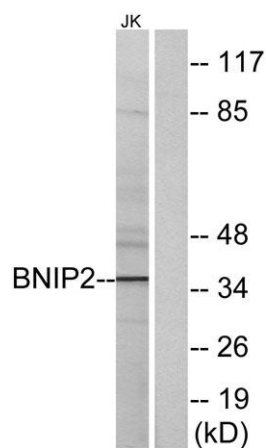
Overview

Product Name	BNIP-2 rabbit pAb
Host species	Rabbit
Applications	WB;IF;FCM;ELISA
Species Cross-Reactivity	Human;Rat;Mouse;
Recommended dilutions	Western Blot: 1/500 - 1/2000. Immunofluorescence: 1/200 - 1/1000. Flow cytometry: 1/200 - 1/400. ELISA: 1/40000. Not yet tested in other applications.
Immunogen	The antiserum was produced against synthesized peptide derived from human BNIP2. AA range:265-314
Specificity	BNIP-2 Polyclonal Antibody detects endogenous levels of BNIP-2 protein.
Formulation	Liquid in PBS containing 50% glycerol, 0.5% BSA and 0.02% sodium azide.
Storage	Store at -20°C. Avoid repeated freeze-thaw cycles.
Protein Name	BCL2/adenovirus E1B 19 kDa protein-interacting protein 2
Gene Name	BNIP2
Cellular localization	Cytoplasm. Cytoplasm, perinuclear region. Localizes to the nuclear envelope region and to other cytoplasmic structures.
Purification	The antibody was affinity-purified from rabbit antiserum by affinity-chromatography using epitope-specific immunogen.
Clonality	Polyclonal
Concentration	1 mg/ml
Observed band	36kD
Human Gene ID	663
Human Swiss-Prot Number	Q12982
Alternative Names	BNIP2; NIP2; BCL2/adenovirus E1B 19 kDa protein-interacting protein 2
Background	This gene is a member of the BCL2/adenovirus E1B 19 kd-interacting protein (BNIP) family. It interacts





with the E1B 19 kDa protein, which protects cells from virally-induced cell death. The encoded protein also interacts with E1B 19 kDa-like sequences of BCL2, another apoptotic protector. Alternate splicing results in multiple transcript variants. [provided by RefSeq, Mar 2016],



Western blot analysis of lysates from Jurkat cells, using BNIP2 Antibody. The lane on the right is blocked with the synthesized peptide.

