

SGLT-2 rabbit pAb

Cat No.:ES7217

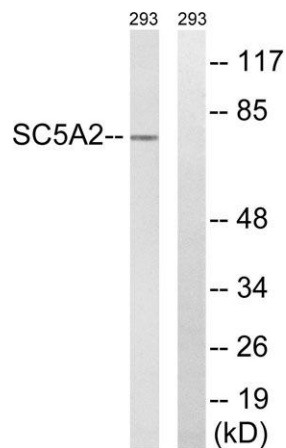
For research use only

Overview

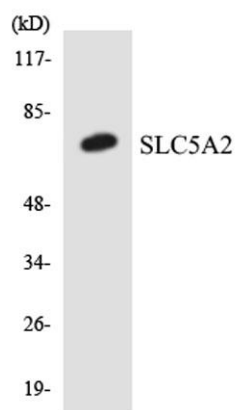
Product Name	SGLT-2 rabbit pAb
Host species	Rabbit
Applications	WB;IHC
Species Cross-Reactivity	Human;Mouse;Rat
Recommended dilutions	WB 1:500-2000;IHC-p 1:50-300
Immunogen	The antiserum was produced against synthesized peptide derived from human SLC5A2. AA range:101-150
Specificity	SGLT-2 Polyclonal Antibody detects endogenous levels of SGLT-2 protein.
Formulation	Liquid in PBS containing 50% glycerol, 0.5% BSA and 0.02% sodium azide.
Storage	Store at -20°C. Avoid repeated freeze-thaw cycles.
Protein Name	Sodium/glucose cotransporter 2
Gene Name	SLC5A2
Cellular localization	Apical cell membrane ; Multi-pass membrane protein .
Purification	The antibody was affinity-purified from rabbit antiserum by affinity-chromatography using epitope-specific immunogen.
Clonality	Polyclonal
Concentration	1 mg/ml
Observed band	73kD
Human Gene ID	6524
Human Swiss-Prot Number	P31639
Alternative Names	SLC5A2; SGLT2; Sodium/glucose cotransporter 2; Na(+)/glucose cotransporter 2; Low affinity sodium-glucose cotransporter; Solute carrier family 5 member 2
Background	This gene encodes a member of the sodium glucose cotransporter family which are sodium-dependent glucose transport proteins. The encoded protein is the major cotransporter involved in glucose



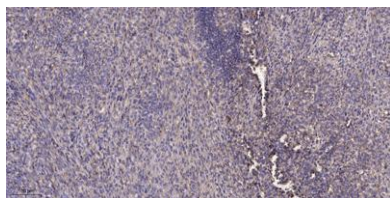
reabsorption in the kidney. Mutations in this gene are associated with renal glucosuria. Two transcript variants, one protein-coding and one not, have been found for this gene. [provided by RefSeq, Feb 2015],



Western blot analysis of lysates from 293 cells, using SLC5A2 Antibody. The lane on the right is blocked with the synthesized peptide.



Western blot analysis of the lysates from Jurkat cells using SLC5A2 antibody.



Immunohistochemical analysis of paraffin-embedded human Colon cancer. 1, Antibody was diluted at 1:200(4° overnight). 2, Tris-EDTA,pH9.0 was used for antigen retrieval. 3,Secondary antibody was diluted at 1:200(room temperature, 45min).

