

S-100A7L2 rabbit pAb

Cat No.:ES7186

For research use only

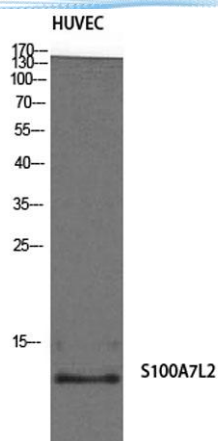
Overview

Product Name	S-100A7L2 rabbit pAb
Host species	Rabbit
Applications	WB;ELISA
Species Cross-Reactivity	Human;Rat;Mouse;
Recommended dilutions	Western Blot: 1/500 - 1/2000. ELISA: 1/10000. Not yet tested in other applications.
Immunogen	The antiserum was produced against synthesized peptide derived from human S100A7L2. AA range:38-87
Specificity	S-100A7L2 Polyclonal Antibody detects endogenous levels of S-100A7L2 protein.
Formulation	Liquid in PBS containing 50% glycerol, 0.5% BSA and 0.02% sodium azide.
Storage	Store at -20°C. Avoid repeated freeze-thaw cycles.
Protein Name	Protein S100-A7-like 2
Gene Name	S100A7L2
Cellular localization	
Purification	The antibody was affinity-purified from rabbit antiserum by affinity-chromatography using epitope-specific immunogen.
Clonality	Polyclonal
Concentration	1 mg/ml
Observed band	11kD
Human Gene ID	645922
Human Swiss-Prot Number	Q5SY68
Alternative Names	S100A7L2; S100A7B; Protein S100-A7-like 2; S100 calcium-binding protein A7-like 2
Background	similarity:Belongs to the S-100 family.,similarity:Contains 2 EF-hand domains.,

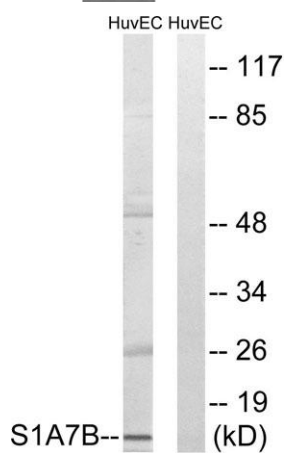




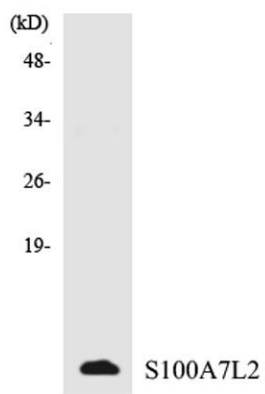
ELK Biotechnology



Western Blot analysis of HuvEc cells using S-100A7L2
Polyclonal Antibody



Western blot analysis of lysates from HUVEC cells, using
S100A7L2 Antibody. The lane on the right is blocked with
the synthesized peptide.



Western blot analysis of the lysates from HepG2 cells
using S100A7L2 antibody.



+86-27-59760950

ELKbio@ELKbiotech.com

www.elkbiotech.com

23-2, No.388 Gaoxin 2nd Road,Wuhan East Lake Hi-tech Development Zone, Hubei , P.R.C