



# Na<sup>+</sup> CP type VII $\alpha$ rabbit pAb

Cat No.:ES7123

For research use only

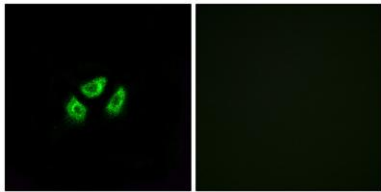
## Overview

Product Name	Na <sup>+</sup> CP type VII $\alpha$ rabbit pAb
Host species	Rabbit
Applications	WB;IHC
Species Cross-Reactivity	Human;Monkey
Recommended dilutions	WB 1:500-2000;IHC-p 1:50-300
Immunogen	The antiserum was produced against synthesized peptide derived from human SCN7A. AA range:771-820
Specificity	Na <sup>+</sup> CP type VII $\alpha$ Polyclonal Antibody detects endogenous levels of Na <sup>+</sup> CP type VII $\alpha$ protein.
Formulation	Liquid in PBS containing 50% glycerol, 0.5% BSA and 0.02% sodium azide.
Storage	Store at -20°C. Avoid repeated freeze-thaw cycles.
Protein Name	Sodium channel protein type 7 subunit alpha
Gene Name	SCN7A
Cellular localization	Cell membrane ; Multi-pass membrane protein .
Purification	The antibody was affinity-purified from rabbit antiserum by affinity-chromatography using epitope-specific immunogen.
Clonality	Polyclonal
Concentration	1 mg/ml
Observed band	200kD
Human Gene ID	6332
Human Swiss-Prot Number	Q01118
Alternative Names	SCN7A; SCN6A; Sodium channel protein type 7 subunit alpha; Putative voltage-gated sodium channel subunit alpha Nax; Sodium channel protein cardiac and skeletal muscle subunit alpha; Sodium channel protein type VII subunit alpha
Background	This gene encodes one of the many voltage-gated sodium channel proteins. For proper functioning of neurons and muscles during action potentials, voltage-gated sodium channels direct sodium ion



diffusion for membrane depolarization. This sodium channel protein has some atypical characteristics; the similarity between the human and mouse proteins is lower compared to other orthologous sodium channel pairs. Also, the S4 segments, which sense voltage changes, have fewer positive charged residues that in other sodium channels; domain 4 has fewer arginine and lysine residues compared to other sodium channel proteins. Several alternatively spliced transcript variants exist, but the full-length natures of all of them remain unknown. [provided by RefSeq, Dec 2011],

Immunofluorescence analysis of A549 cells, using SCN7A Antibody. The picture on the right is blocked with the synthesized peptide.



Immunohistochemical analysis of paraffin-embedded human liver cancer. 1, Antibody was diluted at 1:200(4° overnight). 2, Tris-EDTA,pH9.0 was used for antigen retrieval. 3,Secondary antibody was diluted at 1:200(room temperature, 45min).

