

Na⁺ CP type IV α rabbit pAb

Cat No.:ES7122

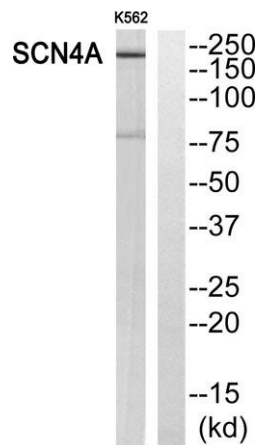
For research use only

Overview

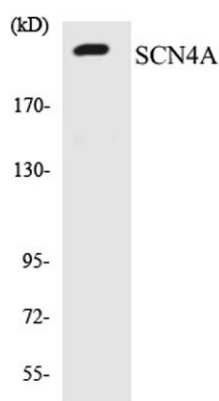
Product Name	Na ⁺ CP type IV α rabbit pAb
Host species	Rabbit
Applications	WB;IHC
Species Cross-Reactivity	Human;Mouse;Rat
Recommended dilutions	WB 1:500-2000;IHC-p 1:50-300
Immunogen	The antiserum was produced against synthesized peptide derived from human SCN4A. AA range:431-480
Specificity	Na ⁺ CP type IV α Polyclonal Antibody detects endogenous levels of Na ⁺ CP type IV α protein.
Formulation	Liquid in PBS containing 50% glycerol, 0.5% BSA and 0.02% sodium azide.
Storage	Store at -20°C. Avoid repeated freeze-thaw cycles.
Protein Name	Sodium channel protein type 4 subunit alpha
Gene Name	SCN4A
Cellular localization	Cell membrane ; Multi-pass membrane protein .
Purification	The antibody was affinity-purified from rabbit antiserum by affinity-chromatography using epitope-specific immunogen.
Clonality	Polyclonal
Concentration	1 mg/ml
Observed band	200kD
Human Gene ID	6329
Human Swiss-Prot Number	P35499
Alternative Names	SCN4A; Sodium channel protein type 4 subunit alpha; SkM1; Sodium channel protein skeletal muscle subunit alpha; Sodium channel protein type IV subunit alpha; Voltage-gated sodium channel subunit alpha Nav1.4
Background	Voltage-gated sodium channels are transmembrane glycoprotein complexes composed of a large alpha subunit with 24 transmembrane domains and one or more regulatory beta subunits. They are



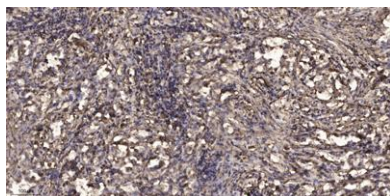
responsible for the generation and propagation of action potentials in neurons and muscle. This gene encodes one member of the sodium channel alpha subunit gene family. It is expressed in skeletal muscle, and mutations in this gene have been linked to several myotonia and periodic paralysis disorders. [provided by RefSeq, Jul 2008],



Western blot analysis of SCN4A Antibody. The lane on the right is blocked with the SCN4A peptide.



Western blot analysis of the lysates from COLO205 cells using SCN4A antibody.



Immunohistochemical analysis of paraffin-embedded human Squamous cell carcinoma of lung. 1, Antibody was diluted at 1:200(4° overnight). 2, Tris-EDTA,pH9.0 was used for antigen retrieval. 3,Secondary antibody was diluted at 1:200(room temperature, 45min).

