

# Ribosomal Protein S13 rabbit pAb

Cat No.:ES7099

For research use only

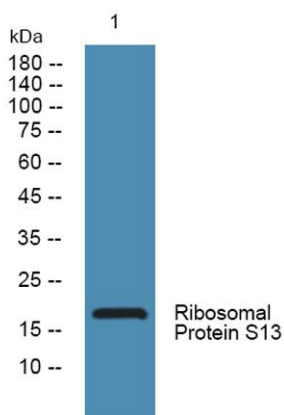
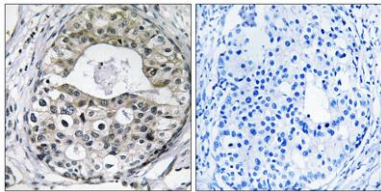
## Overview

Product Name	Ribosomal Protein S13 rabbit pAb
Host species	Rabbit
Applications	WB;IHC;IF;ELISA
Species Cross-Reactivity	Human;Mouse;Rat
Recommended dilutions	Western Blot: 1/500 - 1/2000. Immunohistochemistry: 1/100 - 1/300. ELISA: 1/40000. Not yet tested in other applications.
Immunogen	The antiserum was produced against synthesized peptide derived from human RPS13. AA range:71-120
Specificity	Ribosomal Protein S13 Polyclonal Antibody detects endogenous levels of Ribosomal Protein S13 protein.
Formulation	Liquid in PBS containing 50% glycerol, 0.5% BSA and 0.02% sodium azide.
Storage	Store at -20°C. Avoid repeated freeze-thaw cycles.
Protein Name	40S ribosomal protein S13
Gene Name	RPS13
Cellular localization	nucleus,nucleoplasm,nucleolus,cytosol,ribosome,focal adhesion,membrane,cytosolic small ribosomal subunit,extracellular matrix,extracellular exosome,
Purification	The antibody was affinity-purified from rabbit antiserum by affinity-chromatography using epitope-specific immunogen.
Clonality	Polyclonal
Concentration	1 mg/ml
Observed band	17kD
Human Gene ID	6207
Human Swiss-Prot Number	P62277
Alternative Names	RPS13; 40S ribosomal protein S13
Background	Ribosomes, the organelles that catalyze protein synthesis, consist of a small 40S subunit and a large 60S subunit. Together these subunits are composed of 4 RNA species and approximately 80 structurally distinct proteins. This gene encodes a ribosomal



protein that is a component of the 40S subunit. The protein belongs to the S15P family of ribosomal proteins. It is located in the cytoplasm. The protein has been shown to bind to the 5.8S rRNA in rat. The gene product of the *E. coli* ortholog (ribosomal protein S15) functions at early steps in ribosome assembly. This gene is co-transcribed with two U14 small nucleolar RNA genes, which are located in its third and fifth introns. As is typical for genes encoding ribosomal proteins, there are multiple processed pseudogenes of this gene dispersed through the genome. [provided by RefSeq, Jul 2008],

Immunohistochemistry analysis of paraffin-embedded human breast carcinoma tissue, using RPS13 Antibody. The picture on the right is blocked with the synthesized peptide.



Western blot analysis of lysates from PC12 cells, primary antibody was diluted at 1:1000, 4° over night

