



Ribosomal Protein S6 (phospho Ser240) rabbit pAb

Cat No.:ES7078

For research use only

Overview

Product Name	Ribosomal Protein S6 (phospho Ser240) rabbit pAb
Host species	Rabbit
Applications	WB;IHC;IF;ELISA
Species	Human;Mouse;Rat
Cross-Reactivity	
Recommended dilutions	Western Blot: 1/500 - 1/2000. Immunohistochemistry: 1/100 - 1/300. Immunofluorescence: 1/200 - 1/1000. ELISA: 1/5000. Not yet tested in other applications.
Immunogen	The antiserum was produced against synthesized peptide derived from human S6 Ribosomal Protein around the phosphorylation site of Ser240. AA range:200-249
Specificity	Phospho-Ribosomal Protein S6 (S240) Polyclonal Antibody detects endogenous levels of Ribosomal Protein S6 protein only when phosphorylated at S240.
Formulation	Liquid in PBS containing 50% glycerol, 0.5% BSA and 0.02% sodium azide.
Storage	Store at -20°C. Avoid repeated freeze-thaw cycles.
Protein Name	40S ribosomal protein S6
Gene Name	RPS6
Cellular localization	nucleus,nucleoplasm,nucleolus,cytoplasm,cytosol,ribosome,polyosome,small ribosomal subunit,membrane,cytosolic small ribosomal subunit,dendrite,intracellular ribonucleoprotein complex,cytoplasmic ribonucleoprotein granule
Purification	The antibody was affinity-purified from rabbit antiserum by affinity-chromatography using epitope-specific immunogen.
Clonality	Polyclonal
Concentration	1 mg/ml
Observed band	28kD
Human Gene ID	6194





Human P62753

**Swiss-Prot
Number**

Alternative RPS6; OK/SW-cl.2; 40S ribosomal protein S6; Phosphoprotein NP33

Names

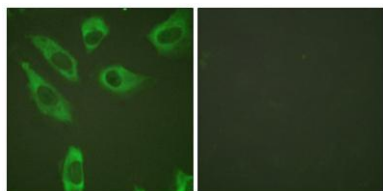
Background

Ribosomes, the organelles that catalyze protein synthesis, consist of a small 40S subunit and a large 60S subunit. Together these subunits are composed of 4 RNA species and approximately 80 structurally distinct proteins. This gene encodes a cytoplasmic ribosomal protein that is a component of the 40S subunit. The protein belongs to the S6E family of ribosomal proteins. It is the major substrate of protein kinases in the ribosome, with subsets of five C-terminal serine residues phosphorylated by different protein kinases.

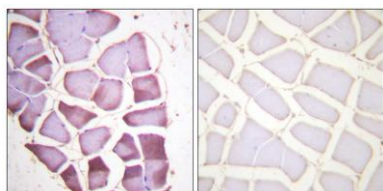
Phosphorylation is induced by a wide range of stimuli, including growth factors, tumor-promoting agents, and mitogens.

Dephosphorylation occurs at growth arrest. The protein may contribute to the control of cell growth and proliferation through the selective translation of particular classes of mRNA. As is typical for genes encoding ribosomal proteins, there are multiple processed

Immunofluorescence analysis of HeLa cells, using S6 Ribosomal Protein (Phospho-Ser240) Antibody. The picture on the right is blocked with the phospho peptide.

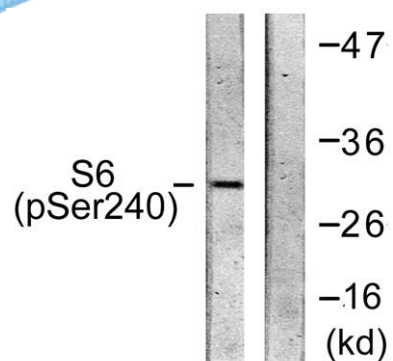


Immunohistochemistry analysis of paraffin-embedded human skeletal muscle, using S6 Ribosomal Protein (Phospho-Ser240) Antibody. The picture on the right is blocked with the phospho peptide.





ELK Biotechnology



Western blot analysis of lysates from HeLa cells treated with TNF- α 20ng/ml 2', using S6 Ribosomal Protein (Phospho-Ser240) Antibody. The lane on the right is blocked with the phospho peptide.



+86-27-59760950

ELKbio@ELKbiotech.com

www.elkbiotech.com

23-2, No.388 Gaoxin 2nd Road,Wuhan East Lake Hi-tech Development Zone, Hubei , P.R.C