

Bcr (phospho Tyr360) rabbit pAb

Cat No.:ES7065

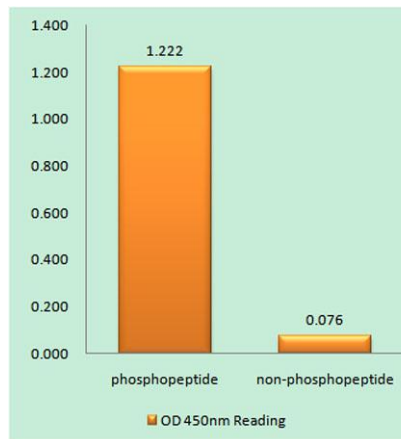
For research use only

Overview

Product Name	Bcr (phospho Tyr360) rabbit pAb
Host species	Rabbit
Applications	WB;IHC;IF;ELISA
Species Cross-Reactivity	Human;Mouse;Monkey
Recommended dilutions	Western Blot: 1/500 - 1/2000. Immunohistochemistry: 1/100 - 1/300. Immunofluorescence: 1/200 - 1/1000. ELISA: 1/40000. Not yet tested in other applications.
Immunogen	The antiserum was produced against synthesized peptide derived from human Bcr around the phosphorylation site of Tyr360. AA range:331-380
Specificity	Phospho-Bcr (Y360) Polyclonal Antibody detects endogenous levels of Bcr protein only when phosphorylated at Y360.
Formulation	Liquid in PBS containing 50% glycerol, 0.5% BSA and 0.02% sodium azide.
Storage	Store at -20°C. Avoid repeated freeze-thaw cycles.
Protein Name	Breakpoint cluster region protein
Gene Name	BCR
Cellular localization	Cell junction, synapse, postsynaptic density . Cell projection, dendritic spine . Cell projection, axon . Cell junction, synapse .
Purification	The antibody was affinity-purified from rabbit antiserum by affinity-chromatography using epitope-specific immunogen.
Clonality	Polyclonal
Concentration	1 mg/ml
Observed band	142kD
Human Gene ID	613
Human Swiss-Prot Number	P11274
Alternative Names	BCR; BCR1; D22S11; Breakpoint cluster region protein; Renal carcinoma antigen NY-REN-26
Background	A reciprocal translocation between chromosomes 22

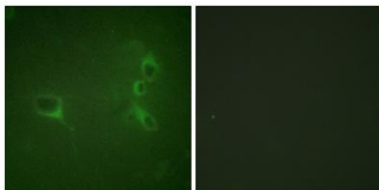


and 9 produces the Philadelphia chromosome, which is often found in patients with chronic myelogenous leukemia. The chromosome 22 breakpoint for this translocation is located within the BCR gene. The translocation produces a fusion protein which is encoded by sequence from both BCR and ABL, the gene at the chromosome 9 breakpoint. Although the BCR-ABL fusion protein has been extensively studied, the function of the normal BCR gene product is not clear. The protein has serine/threonine kinase activity and is a GTPase-activating protein for p21rac. Two transcript variants encoding different isoforms have been found for this gene. [provided by RefSeq, Jul 2008],



Enzyme-Linked Immunosorbent Assay (Phospho-ELISA) for Immunogen Phosphopeptide (Phospho-left) and Non-Phosphopeptide (Phospho-right), using Bcr (Phospho-Tyr360) Antibody

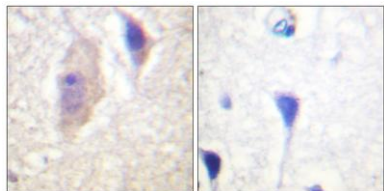
Immunofluorescence analysis of NIH/3T3 cells, using Bcr (Phospho-Tyr360) Antibody. The picture on the right is blocked with the phospho peptide.



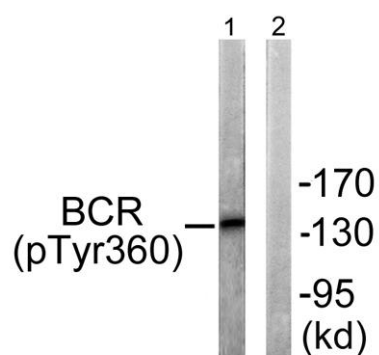


ELK Biotechnology

Immunohistochemistry analysis of paraffin-embedded human brain, using Bcr (Phospho-Tyr360) Antibody. The picture on the right is blocked with the phospho peptide.



Western blot analysis of lysates from COS7 cells, using Bcr (Phospho-Tyr360) Antibody. The lane on the right is blocked with the phospho peptide.



+86-27-59760950

ELKbio@ELKbiotech.com

www.elkbiotech.com

23-2, No.388 Gaoxin 2nd Road, Wuhan East Lake Hi-tech Development Zone, Hubei, P.R.C.