

RGS12 rabbit pAb

Cat No.:ES7043

For research use only

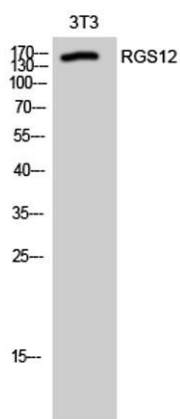
Overview

Product Name	RGS12 rabbit pAb
Host species	Rabbit
Applications	WB;ELISA;IHC
Species Cross-Reactivity	Human;Mouse;Rat
Recommended dilutions	WB 1:500-2000;IHC-p 1:50-300; ELISA 2000-20000
Immunogen	The antiserum was produced against synthesized peptide derived from human RGS12. AA range:141-190
Specificity	RGS12 Polyclonal Antibody detects endogenous levels of RGS12 protein.
Formulation	Liquid in PBS containing 50% glycerol, 0.5% BSA and 0.02% sodium azide.
Storage	Store at -20°C. Avoid repeated freeze-thaw cycles.
Protein Name	Regulator of G-protein signaling 12
Gene Name	RGS12
Cellular localization	Nucleus . Cytoplasm . Cell projection, dendrite . Cell junction, synapse .; [Isoform 5]: Nucleus matrix . Also localized to discrete nuclear foci that are distinct from sites of RNA processing, PML nuclear bodies, and PcG domains. .
Purification	The antibody was affinity-purified from rabbit antiserum by affinity-chromatography using epitope-specific immunogen.
Clonality	Polyclonal
Concentration	1 mg/ml
Observed band	160kD
Human Gene ID	6002
Human Swiss-Prot Number	O14924
Alternative Names	RGS12; Regulator of G-protein signaling 12; RGS12
Background	This gene encodes a member of the 'regulator of G protein signaling' (RGS) gene family. The encoded protein may function as a guanosine triphosphatase (GTPase)-activating protein as well as a

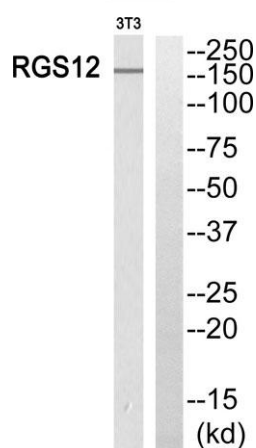




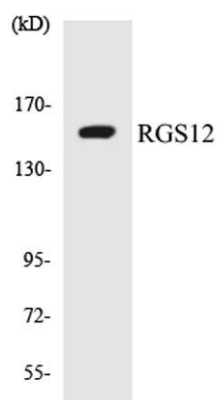
transcriptional repressor. This protein may play a role in tumorigenesis. Multiple transcript variants encoding distinct isoforms have been identified for this gene. Other alternative splice variants have been described but their biological nature has not been determined. [provided by RefSeq, Jul 2008],



Western Blot analysis of 3T3 cells using RGS12 Polyclonal Antibody cells nucleus extracted by Minute TM Cytoplasmic and Nuclear Fractionation kit (SC-003, Inventbiotech, MN, USA).



Western blot analysis of RGS12 Antibody. The lane on the right is blocked with the RGS12 peptide.

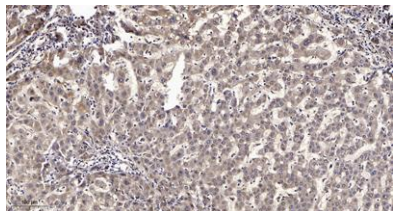


Western blot analysis of the lysates from HUVEC cells using RGS12 antibody.





ELK Biotechnology



Immunohistochemical analysis of paraffin-embedded human liver cancer. 1, Antibody was diluted at 1:200(4° overnight). 2, Tris-EDTA,pH9.0 was used for antigen retrieval. 3,Secondary antibody was diluted at 1:200(room temperature, 45min).



+86-27-59760950

ELKbio@ELKbiotech.com

www.elkbiotech.com

23-2, No.388 Gaoxin 2nd Road,Wuhan East Lake Hi-tech Development Zone, Hubei , P.R.C