

REXO1 rabbit pAb

Cat No.:ES6898

For research use only

Overview

Product Name	REXO1 rabbit pAb
Host species	Rabbit
Applications	IHC;IF;ELISA
Species Cross-Reactivity	Human;Rat;Mouse;
Recommended dilutions	Immunohistochemistry: 1/100 - 1/300. ELISA: 1/20000. Not yet tested in other applications.
Immunogen	The antiserum was produced against synthesized peptide derived from human REXO1. AA range:185-234
Specificity	REXO1 Polyclonal Antibody detects endogenous levels of REXO1 protein.
Formulation	Liquid in PBS containing 50% glycerol, 0.5% BSA and 0.02% sodium azide.
Storage	Store at -20°C. Avoid repeated freeze-thaw cycles.
Protein Name	RNA exonuclease 1 homolog
Gene Name	REXO1
Cellular localization	Nucleus .
Purification	The antibody was affinity-purified from rabbit antiserum by affinity-chromatography using epitope-specific immunogen.
Clonality	Polyclonal
Concentration	1 mg/ml
Observed band	
Human Gene ID	57455
Human Swiss-Prot Number	Q8N1G1
Alternative Names	REXO1; ELOABP1; KIAA1138; TCEB3BP1; RNA exonuclease 1 homolog; Elongin-A-binding protein 1; EloA-BP1; Transcription elongation factor B polypeptide 3-binding protein 1
Background	function:Seems to have no detectable effect on transcription elongation in vitro.,similarity:Belongs to the REXO1/REXO3 family.,similarity:Contains 1 exonuclease domain.,subunit:Interacts with TCEA2

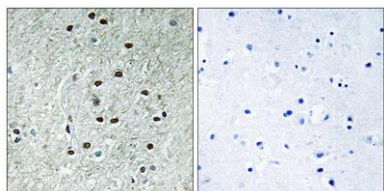




ELK Biotechnology

and TCEB3.,tissue specificity:Ubiquitously expressed.,

Immunohistochemistry analysis of paraffin-embedded human brain, using REXO1 Antibody. The picture on the right is blocked with the synthesized peptide.



+86-27-59760950

ELKbio@ELKbiotech.com

www.elkbiotech.com

23-2, No.388 Gaoxin 2nd Road,Wuhan East Lake Hi-tech Development Zone, Hubei , P.R.C