



# IP Receptor rabbit pAb

Cat No.:ES6891

For research use only

## Overview

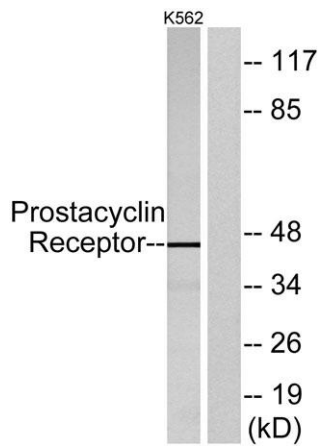
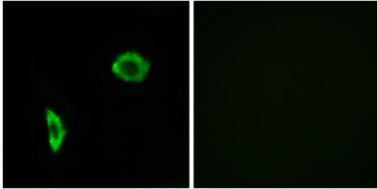
<b>Product Name</b>	IP Receptor rabbit pAb
<b>Host species</b>	Rabbit
<b>Applications</b>	WB;ELISA;IHC
<b>Species Cross-Reactivity</b>	Human;Rat;Mouse;
<b>Recommended dilutions</b>	WB 1:500-2000;IHC-p 1:50-300; ELISA 2000-20000
<b>Immunogen</b>	The antiserum was produced against synthesized peptide derived from human Prostacyclin Receptor. AA range:198-247
<b>Specificity</b>	IP Receptor Polyclonal Antibody detects endogenous levels of IP Receptor protein.
<b>Formulation</b>	Liquid in PBS containing 50% glycerol, 0.5% BSA and 0.02% sodium azide.
<b>Storage</b>	Store at -20°C. Avoid repeated freeze-thaw cycles.
<b>Protein Name</b>	Prostacyclin receptor
<b>Gene Name</b>	PTGIR
<b>Cellular localization</b>	Cell membrane; Multi-pass membrane protein.
<b>Purification</b>	The antibody was affinity-purified from rabbit antiserum by affinity-chromatography using epitope-specific immunogen.
<b>Clonality</b>	Polyclonal
<b>Concentration</b>	1 mg/ml
<b>Observed band</b>	45kD
<b>Human Gene ID</b>	5739
<b>Human Swiss-Prot Number</b>	P43119
<b>Alternative Names</b>	PTGIR; PRIPR; Prostacyclin receptor; Prostaglandin I2 receptor; PGI receptor; PGI2 receptor; Prostanoid IP receptor
<b>Background</b>	The protein encoded by this gene is a member of the G-protein coupled receptor family 1 and has been shown to be a receptor for prostacyclin. Prostacyclin, the major product of cyclooxygenase in macrovascular endothelium, elicits a potent vasodilation and inhibition of platelet aggregation



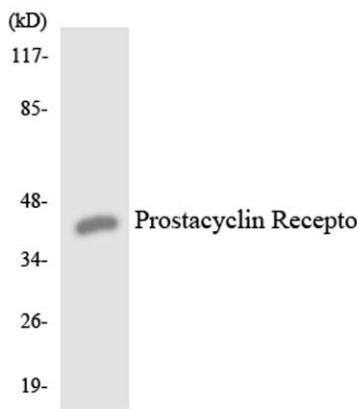


through binding to this receptor. [provided by RefSeq, Jul 2008],

Immunofluorescence analysis of LOVO cells, using Prostacyclin Receptor Antibody. The picture on the right is blocked with the synthesized peptide.



Western blot analysis of lysates from K562 cells, using Prostacyclin Receptor Antibody. The lane on the right is blocked with the synthesized peptide.

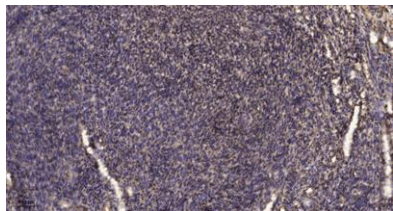


Western blot analysis of the lysates from HUVEC cells using Prostacyclin Receptor antibody.





**ELK Biotechnology**



Immunohistochemical analysis of paraffin-embedded human uterus. 1, Antibody was diluted at 1:200(4° overnight). 2, Tris-EDTA,pH9.0 was used for antigen retrieval. 3,Secondary antibody was diluted at 1:200(room temperature, 45min).



+86-27-59760950

[ELKbio@ELKbiotech.com](mailto:ELKbio@ELKbiotech.com)

[www.elkbiotech.com](http://www.elkbiotech.com)

23-2, No.388 Gaoxin 2nd Road,Wuhan East Lake Hi-tech Development Zone, Hubei , P.R.C