

# SLC4A8/10 rabbit pAb

Cat No.:ES6884

For research use only

## Overview

Product Name	SLC4A8/10 rabbit pAb
Host species	Rabbit
Applications	WB;IHC;IF;ELISA
Species Cross-Reactivity	Human;Mouse;Rat
Recommended dilutions	Western Blot: 1/500 - 1/2000. Immunohistochemistry: 1/100 - 1/300. ELISA: 1/40000. Not yet tested in other applications.
Immunogen	The antiserum was produced against synthesized peptide derived from human SLC4A8/10. AA range:411-460
Specificity	SLC4A8/10 Polyclonal Antibody detects endogenous levels of SLC4A8/10 protein.
Formulation	Liquid in PBS containing 50% glycerol, 0.5% BSA and 0.02% sodium azide.
Storage	Store at -20°C. Avoid repeated freeze-thaw cycles.
Protein Name	Electroneutral sodium bicarbonate exchanger 1/Sodium-driven chloride bicarbonate exchanger
Gene Name	SLC4A8/SLC4A10
Cellular localization	Membrane ; Multi-pass membrane protein .
Purification	The antibody was affinity-purified from rabbit antiserum by affinity-chromatography using epitope-specific immunogen.
Clonality	Polyclonal
Concentration	1 mg/ml
Observed band	140kD
Human Gene ID	57282/9498
Human Swiss-Prot Number	Q2Y0W8/Q6U841
Alternative Names	SLC4A8; KIAA0739; NBC; NBC3; NDCBE1; Electroneutral sodium bicarbonate exchanger 1; Electroneutral Na(+)-driven Cl-HCO <sub>3</sub> exchanger; Solute carrier family 4 member 8; k-NBC3; SLC4A10; NCBE; Sodium-driven chloride bicarbonate exchanger; Solute

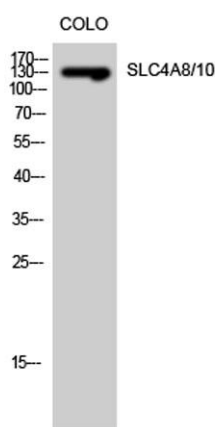




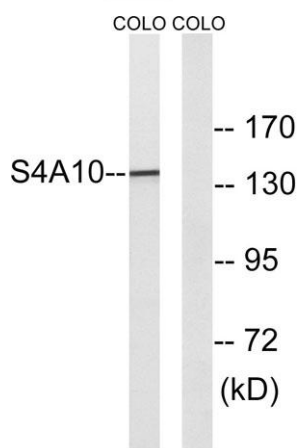
## Background

The protein encoded by this gene is a membrane protein that functions to transport sodium and bicarbonate ions across the cell membrane. The encoded protein is important for pH regulation in neurons. The activity of this protein can be inhibited by 4,4'-Di-isothiocyanatostilbene-2,2'-disulfonic acid (DIDS). Several transcript variants encoding different isoforms have been found for this gene. [provided by RefSeq, Apr 2012],

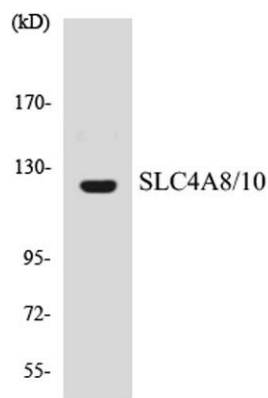
Western Blot analysis of COLO cells using SLC4A8/10  
Polyclonal Antibody diluted at 1:500



Western blot analysis of lysates from COLO cells, using  
SLC4A8/10 Antibody. The lane on the right is blocked with  
the synthesized peptide.



Western blot analysis of the lysates from HUVEC cells  
using SLC4A8/10 antibody.





**ELK Biotechnology**



+86-27-59760950

[ELKbio@ELKbiotech.com](mailto:ELKbio@ELKbiotech.com)

[www.elkbiotech.com](http://www.elkbiotech.com)

23-2, No.388 Gaoxin 2nd Road,Wuhan East Lake Hi-tech Development Zone, Hubei , P.R.C