

MRP-L47 rabbit pAb

Cat No.:ES6871

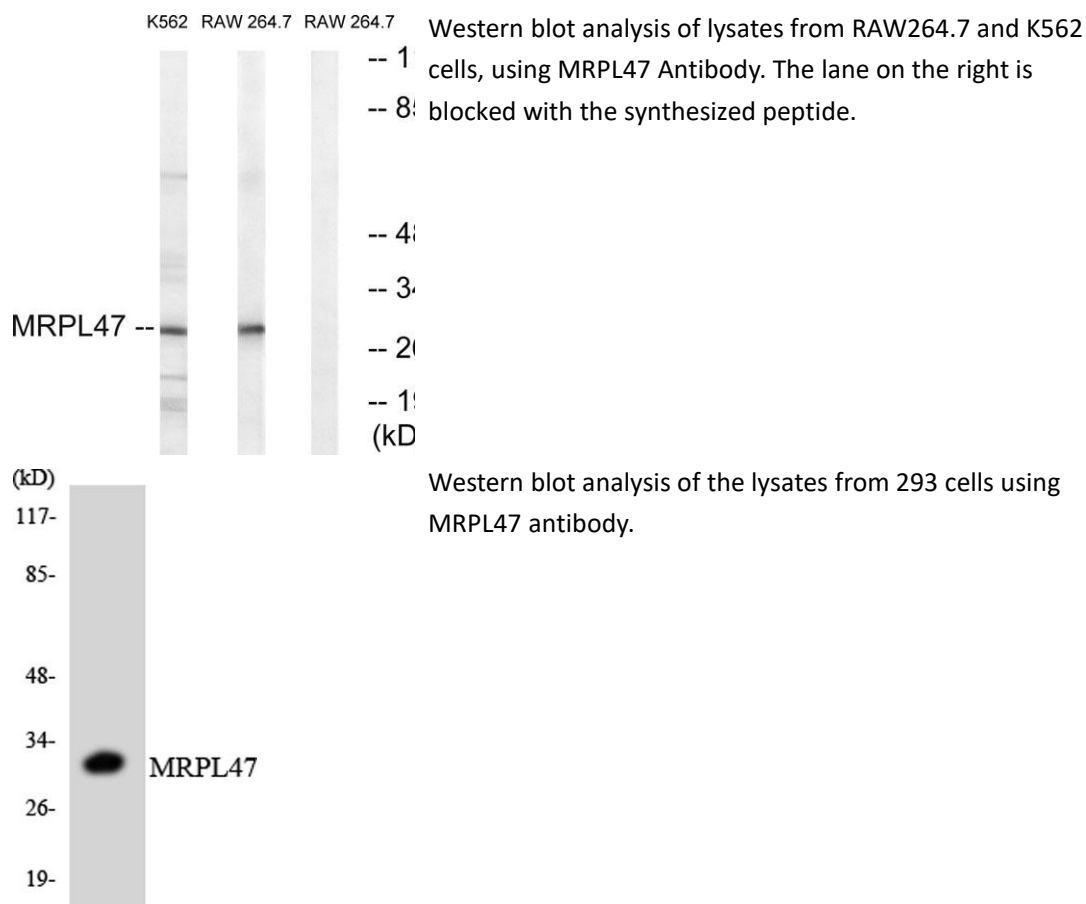
For research use only

Overview

Product Name	MRP-L47 rabbit pAb
Host species	Rabbit
Applications	WB;IHC
Species Cross-Reactivity	Human;Rat;Mouse;
Recommended dilutions	WB 1:500-2000;IHC-p 1:50-300
Immunogen	The antiserum was produced against synthesized peptide derived from human MRPL47. AA range:191-240
Specificity	MRP-L47 Polyclonal Antibody detects endogenous levels of MRP-L47 protein.
Formulation	Liquid in PBS containing 50% glycerol, 0.5% BSA and 0.02% sodium azide.
Storage	Store at -20°C. Avoid repeated freeze-thaw cycles.
Protein Name	39S ribosomal protein L47 mitochondrial
Gene Name	MRPL47
Cellular localization	Mitochondrion .
Purification	The antibody was affinity-purified from rabbit antiserum by affinity-chromatography using epitope-specific immunogen.
Clonality	Polyclonal
Concentration	1 mg/ml
Observed band	30kD
Human Gene ID	57129
Human Swiss-Prot Number	Q9HD33
Alternative Names	MRPL47; NCM1; CGI-204; 39S ribosomal protein L47; mitochondrial; L47mt; MRP-L47; Nasopharyngeal carcinoma metastasis-related protein 1
Background	Mammalian mitochondrial ribosomal proteins are encoded by nuclear genes and help in protein synthesis within the mitochondrion. Mitochondrial ribosomes (mitoribosomes) consist of a small 28S subunit and a large 39S subunit. They have an

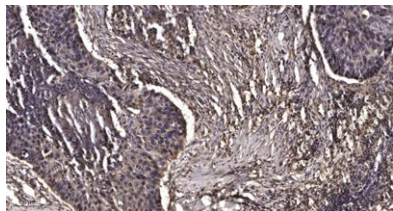


estimated 75% protein to rRNA composition compared to prokaryotic ribosomes, where this ratio is reversed. Another difference between mammalian mitoribosomes and prokaryotic ribosomes is that the latter contain a 5S rRNA. Among different species, the proteins comprising the mitoribosome differ greatly in sequence, and sometimes in biochemical properties, which prevents easy recognition by sequence homology. This gene encodes a 39S subunit protein. This gene is immediately adjacent to the gene for BAF complex 53 kDa subunit protein a (BAF53a), in a tail-to-tail orientation. Two transcript variants encoding different protein isoforms have been identified





ELK Biotechnology



Immunohistochemical analysis of paraffin-embedded human Squamous cell carcinoma of lung. 1, Antibody was diluted at 1:200(4° overnight). 2, Tris-EDTA,pH9.0 was used for antigen retrieval. 3,Secondary antibody was diluted at 1:200(room temperature, 45min).



+86-27-59760950

ELKbio@ELKbiotech.com

www.elkbiotech.com

23-2, No.388 Gaoxin 2nd Road,Wuhan East Lake Hi-tech Development Zone, Hubei , P.R.C