

ERK 3 (phospho Ser189) rabbit pAb

Cat No.:ES6816

For research use only

Overview

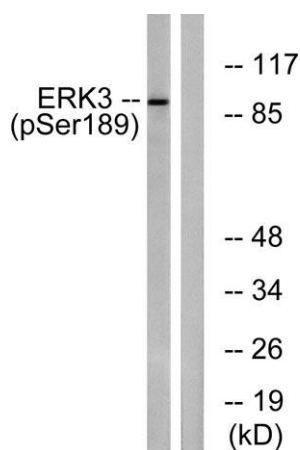
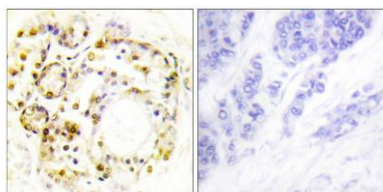
Product Name	ERK 3 (phospho Ser189) rabbit pAb
Host species	Rabbit
Applications	WB;IHC;IF;ELISA
Species Cross-Reactivity	Human;Mouse;Rat
Recommended dilutions	Western Blot: 1/500 - 1/2000. Immunohistochemistry: 1/100 - 1/300. ELISA: 1/5000. Not yet tested in other applications.
Immunogen	The antiserum was produced against synthesized peptide derived from human ERK3 around the phosphorylation site of Ser189. AA range:155-204
Specificity	Phospho-ERK 3 (S189) Polyclonal Antibody detects endogenous levels of ERK 3 protein only when phosphorylated at S189.
Formulation	Liquid in PBS containing 50% glycerol, 0.5% BSA and 0.02% sodium azide.
Storage	Store at -20°C. Avoid repeated freeze-thaw cycles.
Protein Name	Mitogen-activated protein kinase 6
Gene Name	MAPK6
Cellular localization	Cytoplasm . Nucleus . Translocates to the cytoplasm following interaction with MAPKAPK5. .
Purification	The antibody was affinity-purified from rabbit antiserum by affinity-chromatography using epitope-specific immunogen.
Clonality	Polyclonal
Concentration	1 mg/ml
Observed band	90kD
Human Gene ID	5597
Human Swiss-Prot Number	Q16659
Alternative Names	MAPK6; ERK3; PRKM6; Mitogen-activated protein kinase 6; MAP kinase 6; MAPK 6; Extracellular signal-regulated kinase 3; ERK-3; MAP kinase isoform p97; p97-MAPK
Background	The protein encoded by this gene is a member of





the Ser/Thr protein kinase family, and is most closely related to mitogen-activated protein kinases (MAP kinases). MAP kinases also known as extracellular signal-regulated kinases (ERKs), are activated through protein phosphorylation cascades and act as integration points for multiple biochemical signals. This kinase is localized in the nucleus, and has been reported to be activated in fibroblasts upon treatment with serum or phorbol esters. [provided by RefSeq, Jul 2008],

Immunohistochemistry analysis of paraffin-embedded human breast carcinoma, using ERK3 (Phospho-Ser189) Antibody. The picture on the right is blocked with the phospho peptide.



Western blot analysis of lysates from mouse brain, using ERK3 (Phospho-Ser189) Antibody. The lane on the right is blocked with the phospho peptide.

