

Dok-5 rabbit pAb

Cat No.:ES6782

For research use only

Overview

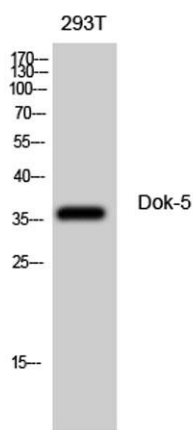
Product Name	Dok-5 rabbit pAb
Host species	Rabbit
Applications	WB;ELISA
Species Cross-Reactivity	Human;Mouse
Recommended dilutions	Western Blot: 1/500 - 1/2000. ELISA: 1/20000. Not yet tested in other applications.
Immunogen	The antiserum was produced against synthesized peptide derived from human DOK5. AA range:101-150
Specificity	Dok-5 Polyclonal Antibody detects endogenous levels of Dok-5 protein.
Formulation	Liquid in PBS containing 50% glycerol, 0.5% BSA and 0.02% sodium azide.
Storage	Store at -20°C. Avoid repeated freeze-thaw cycles.
Protein Name	Docking protein 5
Gene Name	DOK5
Cellular localization	intracellular,
Purification	The antibody was affinity-purified from rabbit antiserum by affinity-chromatography using epitope-specific immunogen.
Clonality	Polyclonal
Concentration	1 mg/ml
Observed band	36kD
Human Gene ID	55816
Human Swiss-Prot Number	Q9P104
Alternative Names	DOK5; C20orf180; Docking protein 5; Downstream of tyrosine kinase 5; Insulin receptor substrate 6; IRS-6; IRS6
Background	docking protein 5(DOK5) Homo sapiens The protein encoded by this gene is a member of the DOK family of membrane proteins, which are adapter proteins involved in signal transduction. The encoded protein interacts with phosphorylated





receptor tyrosine kinases to mediate neurite outgrowth and activation of the MAP kinase pathway. Unlike other DOK family proteins, this protein does not interact with RASGAP. This protein is up-regulated in patients with systemic sclerosis and is associated with fibrosis induced by insulin-like growth factor binding protein 5. Alternative splicing of this gene results in multiple transcript variants. [provided by RefSeq, Jun 2014],

Western Blot analysis of 293T cells using Dok-5 Polyclonal Antibody diluted at 1:500



Western blot analysis of the lysates from HT-29 cells using DOK5 antibody.

