

Cdc37L1 rabbit pAb

Cat No.:ES6742

For research use only

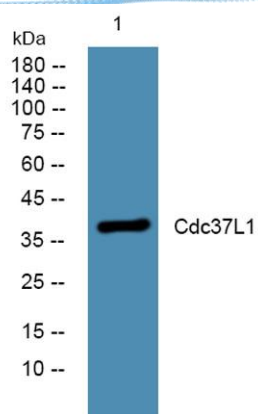
Overview

Product Name	Cdc37L1 rabbit pAb
Host species	Rabbit
Applications	WB;ELISA
Species Cross-Reactivity	Human;Rat
Recommended dilutions	Western Blot: 1/500 - 1/2000. ELISA: 1/40000. Not yet tested in other applications.
Immunogen	Synthesized peptide derived from Cdc37L1 . at AA range: 80-160
Specificity	Cdc37L1 Polyclonal Antibody detects endogenous levels of Cdc37L1 protein.
Formulation	Liquid in PBS containing 50% glycerol, 0.5% BSA and 0.02% sodium azide.
Storage	Store at -20°C. Avoid repeated freeze-thaw cycles.
Protein Name	Hsp90 co-chaperone Cdc37-like 1
Gene Name	CDC37L1
Cellular localization	Cytoplasm .
Purification	The antibody was affinity-purified from rabbit antiserum by affinity-chromatography using epitope-specific immunogen.
Clonality	Polyclonal
Concentration	1 mg/ml
Observed band	38kD
Human Gene ID	55664
Human Swiss-Prot Number	Q7L3B6
Alternative Names	CDC37L1; CDC37B; HARC; Hsp90 co-chaperone Cdc37-like 1; Hsp90-associating relative of Cdc37
Background	CDC37L1 is a cytoplasmic phosphoprotein that exists in complex with HSP90 (HSPCA; MIM 140571) as well as several other proteins involved in HSP90-mediated protein folding (Scholz et al., 2001 [PubMed 11413142]).[supplied by OMIM, Mar 2008],





ELK Biotechnology



Western blot analysis of lysates from KB cells, primary antibody was diluted at 1:1000, 4° over night



+86-27-59760950

ELKbio@ELKbiotech.com

www.elkbiotech.com

23-2, No.388 Gaoxin 2nd Road, Wuhan East Lake Hi-tech Development Zone, Hubei, P.R.C.