



## BCAS4 rabbit pAb

Cat No.:ES6738

For research use only

### Overview

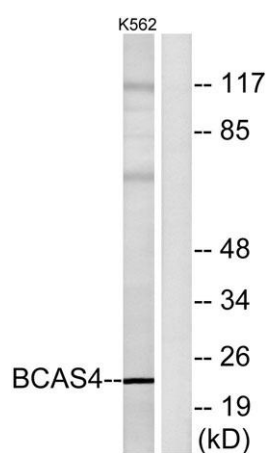
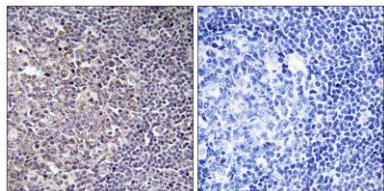
Product Name	BCAS4 rabbit pAb
Host species	Rabbit
Applications	WB;IHC;IF;ELISA
Species Cross-Reactivity	Human;Rat;Mouse;
Recommended dilutions	Western Blot: 1/500 - 1/2000. Immunohistochemistry: 1/100 - 1/300. ELISA: 1/20000. Not yet tested in other applications.
Immunogen	The antiserum was produced against synthesized peptide derived from human BCAS4. AA range:31-80
Specificity	BCAS4 Polyclonal Antibody detects endogenous levels of BCAS4 protein.
Formulation	Liquid in PBS containing 50% glycerol, 0.5% BSA and 0.02% sodium azide.
Storage	Store at -20°C. Avoid repeated freeze-thaw cycles.
Protein Name	Breast carcinoma-amplified sequence 4
Gene Name	BCAS4
Cellular localization	Cytoplasm .
Purification	The antibody was affinity-purified from rabbit antiserum by affinity-chromatography using epitope-specific immunogen.
Clonality	Polyclonal
Concentration	1 mg/ml
Observed band	23kD
Human Gene ID	55653
Human Swiss-Prot Number	Q8TDM0
Alternative Names	BCAS4; Breast carcinoma-amplified sequence 4
Background	disease:A chromosomal aberration involving BCAS4 may be a cause of breast cancer. Translocation t(17;20)(q23;q13) with BCAS3.,similarity:Belongs to the cappuccino family.,tissue specificity:Brain, thymus, spleen, kidney and placenta. Overexpressed in most breast cancer cell lines.,





**ELK Biotechnology**

Immunohistochemistry analysis of paraffin-embedded human tonsil tissue, using BCAS4 Antibody. The picture on the right is blocked with the synthesized peptide.



Western blot analysis of lysates from K562 cells, using BCAS4 Antibody. The lane on the right is blocked with the synthesized peptide.



+86-27-59760950

[ELKbio@ELKbiotech.com](mailto:ELKbio@ELKbiotech.com)

[www.elkbiotech.com](http://www.elkbiotech.com)

23-2, No.388 Gaoxin 2nd Road, Wuhan East Lake Hi-tech Development Zone, Hubei, P.R.C.