

# PP2A-B56- $\delta$ rabbit pAb

Cat No.:ES6719

For research use only

## Overview

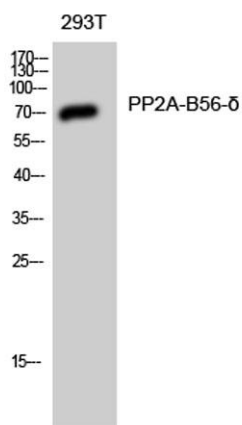
Product Name	PP2A-B56- $\delta$ rabbit pAb
Host species	Rabbit
Applications	WB;IHC;IF;ELISA
Species Cross-Reactivity	Human;Mouse;Rat
Recommended dilutions	Western Blot: 1/500 - 1/2000. Immunohistochemistry: 1/100 - 1/300. ELISA: 1/10000. Not yet tested in other applications.
Immunogen	The antiserum was produced against synthesized peptide derived from human PPP2R5D. AA range:544-593
Specificity	PP2A-B56- $\delta$ Polyclonal Antibody detects endogenous levels of PP2A-B56- $\delta$ protein.
Formulation	Liquid in PBS containing 50% glycerol, 0.5% BSA and 0.02% sodium azide.
Storage	Store at -20°C. Avoid repeated freeze-thaw cycles.
Protein Name	Serine/threonine-protein phosphatase 2A 56 kDa regulatory subunit delta isoform
Gene Name	PPP2R5D
Cellular localization	Cytoplasm. Nucleus. Nuclear in interphase, nuclear during mitosis.
Purification	The antibody was affinity-purified from rabbit antiserum by affinity-chromatography using epitope-specific immunogen.
Clonality	Polyclonal
Concentration	1 mg/ml
Observed band	70kD
Human Gene ID	5528
Human Swiss-Prot Number	Q14738
Alternative Names	PPP2R5D; Serine/threonine-protein phosphatase 2A 56 kDa regulatory subunit delta isoform; PP2A B subunit isoform B'-delta; PP2A B subunit isoform B56-delta; PP2A B subunit isoform PR61-delta; PP2A B subunit isoform R5-delta



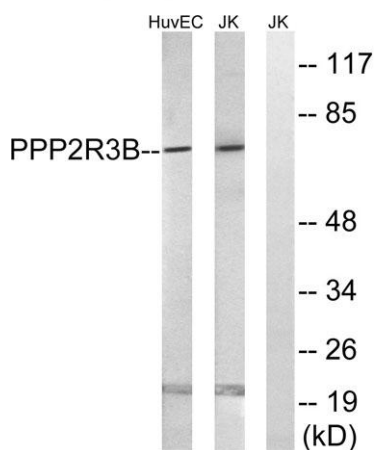


## Background

The product of this gene belongs to the phosphatase 2A regulatory subunit B family. Protein phosphatase 2A is one of the four major Ser/Thr phosphatases, and it is implicated in the negative control of cell growth and division. It consists of a common heteromeric core enzyme, which is composed of a catalytic subunit and a constant regulatory subunit, that associates with a variety of regulatory subunits. The B regulatory subunit might modulate substrate selectivity and catalytic activity. This gene encodes a delta isoform of the regulatory subunit B56 subfamily. Alternatively spliced transcript variants encoding different isoforms have been identified. [provided by RefSeq, Jul 2008],



Western Blot analysis of 293T cells using PP2A-B56- $\delta$  Polyclonal Antibody diluted at 1:1000

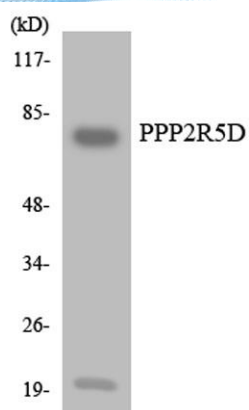


Western blot analysis of lysates from Jurkat and HUVEC cells, using PPP2R5D Antibody. The lane on the right is blocked with the synthesized peptide.

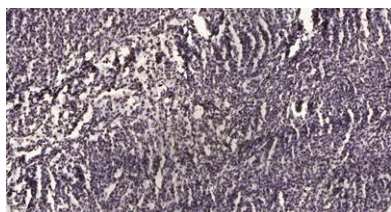




**ELK Biotechnology**



Western blot analysis of the lysates from HUVECcells using PPP2R5D antibody.



Immunohistochemical analysis of paraffin-embedded human brain tumor. 1, Antibody was diluted at 1:200(4° overnight). 2, Tris-EDTA,pH9.0 was used for antigen retrieval. 3,Secondary antibody was diluted at 1:200(room temperature, 45min).



+86-27-59760950

[ELKbio@ELKbiotech.com](mailto:ELKbio@ELKbiotech.com)

[www.elkbiotech.com](http://www.elkbiotech.com)

23-2, No.388 Gaoxin 2nd Road,Wuhan East Lake Hi-tech Development Zone, Hubei , P.R.C