

Epsin 3 rabbit pAb

Cat No.:ES6699

For research use only

Overview

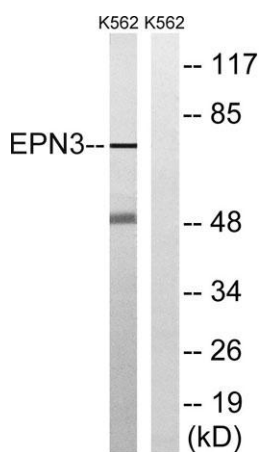
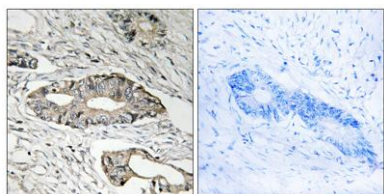
Product Name	Epsin 3 rabbit pAb
Host species	Rabbit
Applications	WB;IHC;IF;ELISA
Species Cross-Reactivity	Human;Rat;Mouse;
Recommended dilutions	Western Blot: 1/500 - 1/2000. Immunohistochemistry: 1/100 - 1/300. ELISA: 1/10000. Not yet tested in other applications.
Immunogen	The antiserum was produced against synthesized peptide derived from human EPN3. AA range:401-450
Specificity	Epsin 3 Polyclonal Antibody detects endogenous levels of Epsin 3 protein.
Formulation	Liquid in PBS containing 50% glycerol, 0.5% BSA and 0.02% sodium azide.
Storage	Store at -20°C. Avoid repeated freeze-thaw cycles.
Protein Name	Epsin-3
Gene Name	EPN3
Cellular localization	Cytoplasm . Cytoplasm, perinuclear region . Cytoplasmic vesicle, clathrin-coated vesicle . Nucleus . Concentrated in the perinuclear region and associated with clathrin-coated vesicles close to the cell periphery. May shuttle to the nucleus.
Purification	The antibody was affinity-purified from rabbit antiserum by affinity-chromatography using epitope-specific immunogen.
Clonality	Polyclonal
Concentration	1 mg/ml
Observed band	68kD
Human Gene ID	55040
Human Swiss-Prot Number	Q9H201
Alternative Names	EPN3; Epsin-3; EPS-15-interacting protein 3
Background	induction:In keratinocytes, by wounding or contact with collagen.,similarity:Belongs to the epsin





family.,similarity:Contains 1 ENTH (epsin N-terminal homology) domain.,similarity:Contains 2 UIM (ubiquitin-interacting motif) repeats.,subcellular location:Concentrated in the perinuclear region and associated with clathrin-coated vesicles close to the cell periphery. May shuttle to the nucleus.,tissue specificity:Detected in migrating keratinocytes from wounded skin, but not in differentiating keratinocytes or in normal skin. Detected in chronic wounds, basal cell carcinoma and ulcerative colitis.,

Immunohistochemistry analysis of paraffin-embedded human colon carcinoma tissue, using EPN3 Antibody. The picture on the right is blocked with the synthesized peptide.

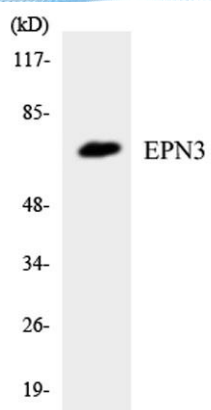


Western blot analysis of lysates from K562 cells, using EPN3 Antibody. The lane on the right is blocked with the synthesized peptide.





ELK Biotechnology



Western blot analysis of the lysates from COLO205 cells using EPN3 antibody.



+86-27-59760950

ELKbio@ELKbiotech.com

www.elkbiotech.com

23-2, No.388 Gaoxin 2nd Road,Wuhan East Lake Hi-tech Development Zone, Hubei , P.R.C