

# CLN6 rabbit pAb

Cat No.:ES6687

For research use only

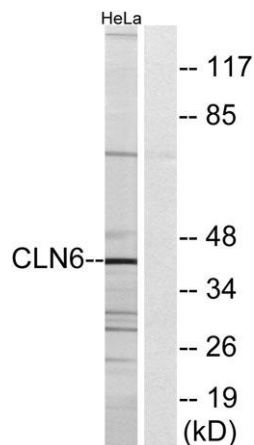
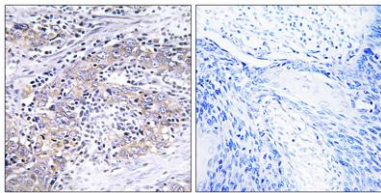
## Overview

Product Name	CLN6 rabbit pAb
Host species	Rabbit
Applications	WB;IHC;IF;ELISA
Species Cross-Reactivity	Human;Rat;Mouse;
Recommended dilutions	Western Blot: 1/500 - 1/2000. Immunohistochemistry: 1/100 - 1/300. ELISA: 1/40000. Not yet tested in other applications.
Immunogen	The antiserum was produced against synthesized peptide derived from human CLN6. AA range:221-270
Specificity	CLN6 Polyclonal Antibody detects endogenous levels of CLN6 protein.
Formulation	Liquid in PBS containing 50% glycerol, 0.5% BSA and 0.02% sodium azide.
Storage	Store at -20°C. Avoid repeated freeze-thaw cycles.
Protein Name	Ceroid-lipofuscinosis neuronal protein 6
Gene Name	CLN6
Cellular localization	Endoplasmic reticulum membrane ; Multi-pass membrane protein . Endoplasmic reticulum .
Purification	The antibody was affinity-purified from rabbit antiserum by affinity-chromatography using epitope-specific immunogen.
Clonality	Polyclonal
Concentration	1 mg/ml
Observed band	40kD
Human Gene ID	54982
Human Swiss-Prot Number	Q9NWW5
Alternative Names	CLN6; Ceroid-lipofuscinosis neuronal protein 6; Protein CLN6
Background	This gene is one of eight which have been associated with neuronal ceroid lipofuscinoses (NCL). Also referred to as Batten disease, NCL comprises a class of autosomal recessive, neurodegenerative



disorders affecting children. The genes responsible likely encode proteins involved in the degradation of post-translationally modified proteins in lysosomes. The primary defect in NCL disorders is thought to be associated with lysosomal storage function. [provided by RefSeq, Oct 2008],

Immunohistochemistry analysis of paraffin-embedded human cervix carcinoma tissue, using CLN6 Antibody. The picture on the right is blocked with the synthesized peptide.



Western blot analysis of lysates from HeLa cells, using CLN6 Antibody. The lane on the right is blocked with the synthesized peptide.

