

# C1orf181 rabbit pAb

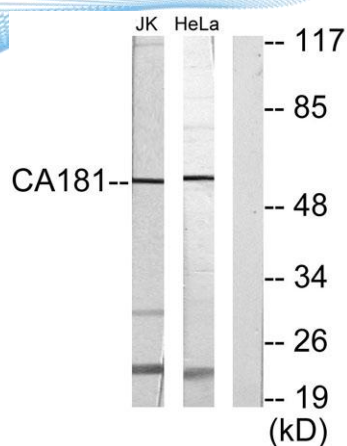
Cat No.:ES6669

For research use only

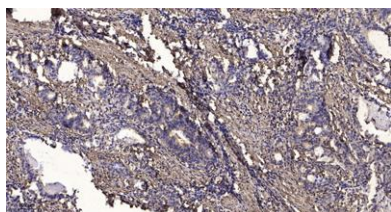
## Overview

Product Name	C1orf181 rabbit pAb
Host species	Rabbit
Applications	WB;IHC;IF;ELISA
Species Cross-Reactivity	Human;Mouse
Recommended dilutions	Western Blot: 1/500 - 1/2000. ELISA: 1/5000. Not yet tested in other applications.
Immunogen	The antiserum was produced against synthesized peptide derived from human CA181. AA range:301-350
Specificity	C1orf181 Polyclonal Antibody detects endogenous levels of C1orf181 protein.
Formulation	Liquid in PBS containing 50% glycerol, 0.5% BSA and 0.02% sodium azide.
Storage	Store at -20°C. Avoid repeated freeze-thaw cycles.
Protein Name	Box C/D snoRNA protein 1
Gene Name	ZNHIT6
Cellular localization	extracellular exosome,pre-snoRNP complex,
Purification	The antibody was affinity-purified from rabbit antiserum by affinity-chromatography using epitope-specific immunogen.
Clonality	Polyclonal
Concentration	1 mg/ml
Observed band	54kD
Human Gene ID	54680
Human Swiss-Prot Number	Q9NWK9
Alternative Names	ZNHIT6; BCD1; C1orf181; Box C/D snoRNA protein 1; Serologically defined breast cancer antigen NY-BR-75; Zinc finger HIT domain-containing protein 6
Background	ZNHIT6 (Zinc Finger HIT-Type Containing 6) is a Protein Coding gene. GO annotations related to this gene include identical protein binding and enzyme binding.





Western blot analysis of lysates from Jurkat and HeLa cells, using CA181 Antibody. The lane on the right is blocked with the synthesized peptide.



Immunohistochemical analysis of paraffin-embedded human Gastric adenocarcinoma. 1, Antibody was diluted at 1:200(4° overnight). 2, Tris-EDTA,pH9.0 was used for antigen retrieval. 3,Secondary antibody was diluted at 1:200(room temperature, 45min).

