



# NLE1 rabbit pAb

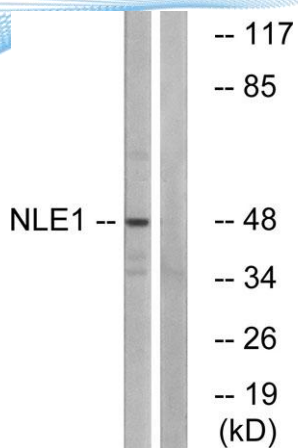
Cat No.:ES6655

For research use only

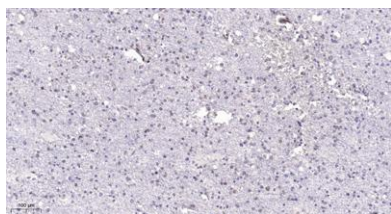
## Overview

<b>Product Name</b>	NLE1 rabbit pAb
<b>Host species</b>	Rabbit
<b>Applications</b>	WB;IHC;IF;ELISA
<b>Species Cross-Reactivity</b>	Human;Monkey
<b>Recommended dilutions</b>	Western Blot: 1/500 - 1/2000. Immunohistochemistry: 1/100 - 1/300. ELISA: 1/40000. Not yet tested in other applications.
<b>Immunogen</b>	The antiserum was produced against synthesized peptide derived from human NLE1. AA range:301-350
<b>Specificity</b>	NLE1 Polyclonal Antibody detects endogenous levels of NLE1 protein.
<b>Formulation</b>	Liquid in PBS containing 50% glycerol, 0.5% BSA and 0.02% sodium azide.
<b>Storage</b>	Store at -20°C. Avoid repeated freeze-thaw cycles.
<b>Protein Name</b>	Notchless protein homolog 1
<b>Gene Name</b>	NLE1
<b>Cellular localization</b>	Nucleus, nucleolus .
<b>Purification</b>	The antibody was affinity-purified from rabbit antiserum by affinity-chromatography using epitope-specific immunogen.
<b>Clonality</b>	Polyclonal
<b>Concentration</b>	1 mg/ml
<b>Observed band</b>	48kD
<b>Human Gene ID</b>	54475
<b>Human Swiss-Prot Number</b>	Q9NVX2
<b>Alternative Names</b>	NLE1; HUSSY-07; Notchless protein homolog 1
<b>Background</b>	similarity:Contains 8 WD repeats.,





Western blot analysis of lysates from COS cells, using NLE1 Antibody. The lane on the right is blocked with the synthesized peptide.



Immunohistochemical analysis of paraffin-embedded human brain. 1, Tris-EDTA, pH9.0 was used for antigen retrieval. 2 Antibody was diluted at 1:200(4° overnight). 3, Secondary antibody was diluted at 1:200(room temperature, 45min).

