



SH3TC1 rabbit pAb

Cat No.:ES6654

For research use only

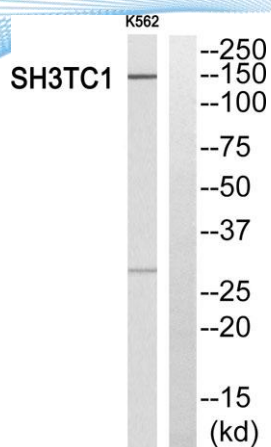
Overview

Product Name	SH3TC1 rabbit pAb
Host species	Rabbit
Applications	WB;ELISA
Species Cross-Reactivity	Human;Rat;Mouse;
Recommended dilutions	Western Blot: 1/500 - 1/2000. ELISA: 1/10000. Not yet tested in other applications.
Immunogen	The antiserum was produced against synthesized peptide derived from human SH3TC1. AA range:391-440
Specificity	SH3TC1 Polyclonal Antibody detects endogenous levels of SH3TC1 protein.
Formulation	Liquid in PBS containing 50% glycerol, 0.5% BSA and 0.02% sodium azide.
Storage	Store at -20°C. Avoid repeated freeze-thaw cycles.
Protein Name	SH3 domain and tetratricopeptide repeat-containing protein 1
Gene Name	SH3TC1
Cellular localization	
Purification	The antibody was affinity-purified from rabbit antiserum by affinity-chromatography using epitope-specific immunogen.
Clonality	Polyclonal
Concentration	1 mg/ml
Observed band	150kD
Human Gene ID	54436
Human Swiss-Prot Number	Q8TE82
Alternative Names	SH3TC1; SH3 domain and tetratricopeptide repeat-containing protein 1
Background	similarity:Contains 1 SH3 domain.,similarity:Contains 9 TPR repeats.,

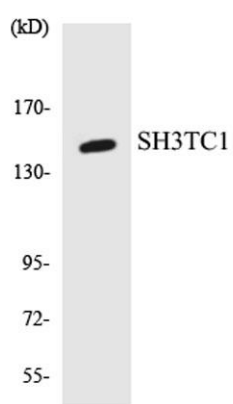




ELK Biotechnology



Western blot analysis of SH3TC1 Antibody. The lane on the right is blocked with the SH3TC1 peptide.



Western blot analysis of the lysates from RAW264.7 cells using SH3TC1 antibody.



+86-27-59760950

ELKbio@ELKbiotech.com

www.elkbiotech.com

23-2, No.388 Gaoxin 2nd Road, Wuhan East Lake Hi-tech Development Zone, Hubei, P.R.C.