



# Endomucin rabbit pAb

Cat No.:ES6559

For research use only

## Overview

<b>Product Name</b>	Endomucin rabbit pAb
<b>Host species</b>	Rabbit
<b>Applications</b>	IF;ELISA
<b>Species Cross-Reactivity</b>	Human;Mouse;Rat
<b>Recommended dilutions</b>	Immunofluorescence: 1/200 - 1/1000. ELISA: 1/5000. Not yet tested in other applications.
<b>Immunogen</b>	The antiserum was produced against synthesized peptide derived from human Mucin-14. AA range:201-250
<b>Specificity</b>	Endomucin Polyclonal Antibody detects endogenous levels of Endomucin protein.
<b>Formulation</b>	Liquid in PBS containing 50% glycerol, 0.5% BSA and 0.02% sodium azide.
<b>Storage</b>	Store at -20°C. Avoid repeated freeze-thaw cycles.
<b>Protein Name</b>	Endomucin
<b>Gene Name</b>	EMCN
<b>Cellular localization</b>	[Isoform 1]: Cell membrane; Single-pass type I membrane protein. Membrane; Single-pass type I membrane protein. Consistently localized to the plasma membrane and less abundantly to Golgi-like perinuclear stacks.; [Isoform 2]: Secreted .
<b>Purification</b>	The antibody was affinity-purified from rabbit antiserum by affinity-chromatography using epitope-specific immunogen.
<b>Clonality</b>	Polyclonal
<b>Concentration</b>	1 mg/ml
<b>Observed band</b>	
<b>Human Gene ID</b>	51705
<b>Human Swiss-Prot Number</b>	Q9ULC0
<b>Alternative Names</b>	EMCN; EMCN2; MUC14; Endomucin; Endomucin-2; Gastric cancer antigen Ga34; Mucin-14; MUC-14
<b>Background</b>	endomucin(EMCN) Homo sapiens EMCN is a mucin-like sialoglycoprotein that interferes with the

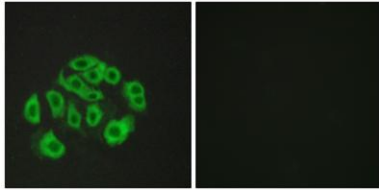




**ELK Biotechnology**

assembly of focal adhesion complexes and inhibits interaction between cells and the extracellular matrix (Kinoshita et al., 2001 [PubMed 11418125]).[supplied by OMIM, Mar 2008],

Immunofluorescence analysis of HepG2 cells, using Mucin-14 Antibody. The picture on the right is blocked with the synthesized peptide.



+86-27-59760950

[ELKbio@ELKbiotech.com](mailto:ELKbio@ELKbiotech.com)

[www.elkbiotech.com](http://www.elkbiotech.com)

23-2, No.388 Gaoxin 2nd Road,Wuhan East Lake Hi-tech Development Zone, Hubei , P.R.C