

# MRP-S17 rabbit pAb

Cat No.:ES6521

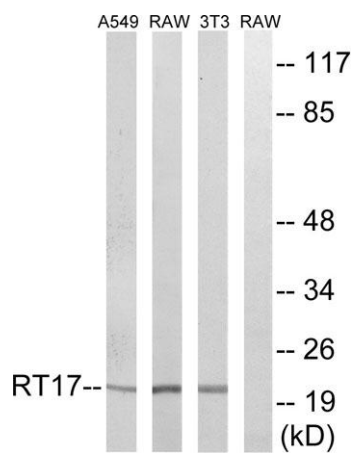
For research use only

## Overview

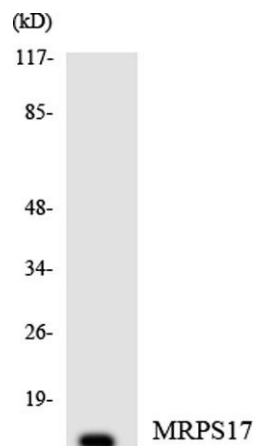
|                          |  |
|--------------------------|--|
| Product Name             | MRP-S17 rabbit pAb   |
| Host species             | Rabbit   |
| Applications             | WB;IHC;IF;ELISA  |
| Species Cross-Reactivity | Human;Mouse  |
| Recommended dilutions    | Western Blot: 1/500 - 1/2000.<br>Immunohistochemistry: 1/100 - 1/300. ELISA:<br>1/40000. Not yet tested in other applications.   |
| Immunogen                | The antiserum was produced against synthesized peptide derived from human MRPS17. AA range:11-60   |
| Specificity              | MRP-S17 Polyclonal Antibody detects endogenous levels of MRP-S17 protein.  |
| Formulation              | Liquid in PBS containing 50% glycerol, 0.5% BSA and 0.02% sodium azide.  |
| Storage                  | Store at -20°C. Avoid repeated freeze-thaw cycles.   |
| Protein Name             | 28S ribosomal protein S17 mitochondrial  |
| Gene Name                | MRPS17   |
| Cellular localization    | Mitochondrion .  |
| Purification             | The antibody was affinity-purified from rabbit antiserum by affinity-chromatography using epitope-specific immunogen.  |
| Clonality                | Polyclonal   |
| Concentration            | 1 mg/ml  |
| Observed band            | 22kD   |
| Human Gene ID            | 51373  |
| Human Swiss-Prot Number  | Q9Y2R5   |
| Alternative Names        | MRPS17; RPMS17; HSPC011; 28S ribosomal protein S17; mitochondrial; MRP-S17; S17mt  |
| Background               | Mammalian mitochondrial ribosomal proteins are encoded by nuclear genes and help in protein synthesis within the mitochondrion. Mitochondrial ribosomes (mitoribosomes) consist of a small 28S subunit and a large 39S subunit. They have an |



estimated 75% protein to rRNA composition compared to prokaryotic ribosomes, where this ratio is reversed. Another difference between mammalian mitoribosomes and prokaryotic ribosomes is that the latter contain a 5S rRNA. Among different species, the proteins comprising the mitoribosome differ greatly in sequence, and sometimes in biochemical properties, which prevents easy recognition by sequence homology. This gene encodes a 28S subunit protein that belongs to the ribosomal protein S17P family. The encoded protein is moderately conserved between human mitochondrial and prokaryotic ribosomal proteins. Pseudogenes corresponding to this gene are found



Western blot analysis of lysates from NIH/3T3, RAW264.7, and A549 cells, using MRPS17 Antibody. The lane on the right is blocked with the synthesized peptide.

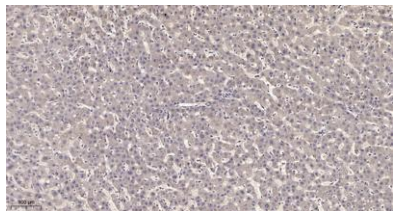


Western blot analysis of the lysates from HeLa cells using MRPS17 antibody.





**ELK Biotechnology**



Immunohistochemical analysis of paraffin-embedded human liver cancer. 1, Antibody was diluted at 1:200(4° overnight). 2, Tris-EDTA,pH9.0 was used for antigen retrieval. 3,Secondary antibody was diluted at 1:200(room temperature, 45min).



+86-27-59760950

ELKbio@ELKbiotech.com

[www.elkbiotech.com](http://www.elkbiotech.com)

23-2, No.388 Gaoxin 2nd Road,Wuhan East Lake Hi-tech Development Zone, Hubei , P.R.C