

ZNF691 rabbit pAb

Cat No.:ES6494

For research use only

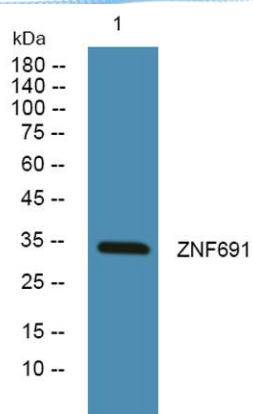
Overview

| | |
|--------------------------|---|
| Product Name | ZNF691 rabbit pAb |
| Host species | Rabbit |
| Applications | WB;ELISA |
| Species Cross-Reactivity | Human;Rat;Mouse; |
| Recommended dilutions | Western Blot: 1/500 - 1/2000. ELISA: 1/40000. Not yet tested in other applications. |
| Immunogen | Synthesized peptide derived from the Internal region of human ZNF691. |
| Specificity | ZNF691 Polyclonal Antibody detects endogenous levels of ZNF691 protein. |
| Formulation | Liquid in PBS containing 50% glycerol, 0.5% BSA and 0.02% sodium azide. |
| Storage | Store at -20°C. Avoid repeated freeze-thaw cycles. |
| Protein Name | Zinc finger protein 691 |
| Gene Name | ZNF691 |
| Cellular localization | Nucleus . |
| Purification | The antibody was affinity-purified from rabbit antiserum by affinity-chromatography using epitope-specific immunogen. |
| Clonality | Polyclonal |
| Concentration | 1 mg/ml |
| Observed band | 33kD |
| Human Gene ID | 51058 |
| Human Swiss-Prot Number | Q5VV52 |
| Alternative Names | ZNF691; Zinc finger protein 691 |
| Background | function:May be involved in transcriptional regulation.,similarity:Belongs to the krueppel C2H2-type zinc-finger protein family.,similarity:Contains 7 C2H2-type zinc fingers., |





ELK Biotechnology



Western blot analysis of lysates from A431 cells, primary antibody was diluted at 1:1000, 4° over night



+86-27-59760950

ELKbio@ELKbiotech.com

www.elkbiotech.com

23-2, No.388 Gaoxin 2nd Road, Wuhan East Lake Hi-tech Development Zone, Hubei, P.R.C.