



## CDO rabbit pAb

Cat No.:ES6489

For research use only

### Overview

Product Name	CDO rabbit pAb
Host species	Rabbit
Applications	IF;ELISA
Species Cross-Reactivity	Human;Rat;Mouse;
Recommended dilutions	Immunofluorescence: 1/200 - 1/1000. ELISA: 1/10000. Not yet tested in other applications.
Immunogen	The antiserum was produced against synthesized peptide derived from human CDON. AA range:511-560
Specificity	CDO Polyclonal Antibody detects endogenous levels of CDO protein.
Formulation	Liquid in PBS containing 50% glycerol, 0.5% BSA and 0.02% sodium azide.
Storage	Store at -20°C. Avoid repeated freeze-thaw cycles.
Protein Name	Cell adhesion molecule-related/down-regulated by oncogenes
Gene Name	CDON
Cellular localization	Cell membrane ; Single-pass membrane protein .
Purification	The antibody was affinity-purified from rabbit antiserum by affinity-chromatography using epitope-specific immunogen.
Clonality	Polyclonal
Concentration	1 mg/ml
Observed band	
Human Gene ID	50937
Human Swiss-Prot Number	Q4KMG0
Alternative Names	CDON; CDO; Cell adhesion molecule-related/down-regulated by oncogenes
Background	This gene encodes a cell surface receptor that is a member of the immunoglobulin superfamily. The encoded protein contains three fibronectin type III domains and five immunoglobulin-like C2-type domains. This protein is a member of a cell-surface

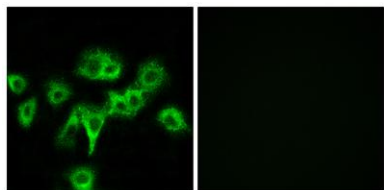




**ELK Biotechnology**

receptor complex that mediates cell-cell interactions between muscle precursor cells and positively regulates myogenesis. [provided by RefSeq, Aug 2011],

Immunofluorescence analysis of HeLa cells, using CDON Antibody. The picture on the right is blocked with the synthesized peptide.



+86-27-59760950

[ELKbio@ELKbiotech.com](mailto:ELKbio@ELKbiotech.com)

[www.elkbiotech.com](http://www.elkbiotech.com)

23-2, No.388 Gaoxin 2nd Road, Wuhan East Lake Hi-tech Development Zone, Hubei, P.R.C.