



T2R7 rabbit pAb

Cat No.:ES6484

For research use only

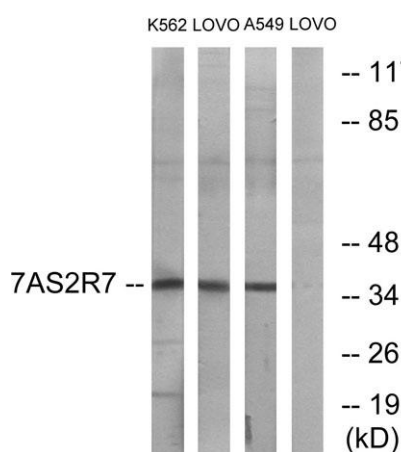
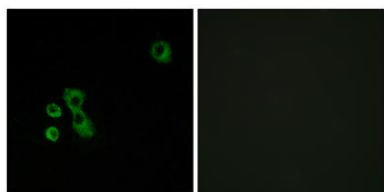
Overview

Product Name	T2R7 rabbit pAb
Host species	Rabbit
Applications	WB;IF;ELISA
Species Cross-Reactivity	Human;Rat;Mouse;
Recommended dilutions	Western Blot: 1/500 - 1/2000. Immunofluorescence: 1/200 - 1/1000. ELISA: 1/20000. Not yet tested in other applications.
Immunogen	The antiserum was produced against synthesized peptide derived from human TAS2R7. AA range:47-96
Specificity	T2R7 Polyclonal Antibody detects endogenous levels of T2R7 protein.
Formulation	Liquid in PBS containing 50% glycerol, 0.5% BSA and 0.02% sodium azide.
Storage	Store at -20°C. Avoid repeated freeze-thaw cycles.
Protein Name	Taste receptor type 2 member 7
Gene Name	TAS2R7
Cellular localization	Membrane; Multi-pass membrane protein.
Purification	The antibody was affinity-purified from rabbit antiserum by affinity-chromatography using epitope-specific immunogen.
Clonality	Polyclonal
Concentration	1 mg/ml
Observed band	36kD
Human Gene ID	50837
Human Swiss-Prot Number	Q9NYW3
Alternative Names	TAS2R7; Taste receptor type 2 member 7; T2R7; Taste receptor family B member 4; TRB4
Background	This gene product belongs to the family of candidate taste receptors that are members of the G-protein-coupled receptor superfamily. These proteins are specifically expressed in the taste receptor cells of the tongue and palate epithelia.



They are organized in the genome in clusters and are genetically linked to loci that influence bitter perception in mice and humans. In functional expression studies, they respond to bitter tastants. This gene maps to the taste receptor gene cluster on chromosome 12p13. [provided by RefSeq, Jul 2008],

Immunofluorescence analysis of MCF7 cells, using TAS2R7 Antibody. The picture on the right is blocked with the synthesized peptide.



Western blot analysis of lysates from K562, LOVO, and A549 cells, using TAS2R7 Antibody. The lane on the right is blocked with the synthesized peptide.



Western blot analysis of the lysates from HepG2 cells using TAS2R7 antibody.

