

Pax-1 rabbit pAb

Cat No.:ES6480

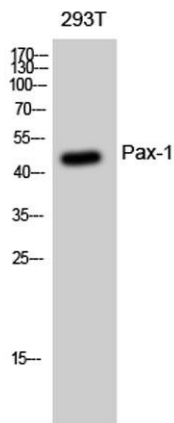
For research use only

Overview

Product Name	Pax-1 rabbit pAb
Host species	Rabbit
Applications	WB;IHC;IF;ELISA
Species Cross-Reactivity	Human;Rat;Mouse;
Recommended dilutions	Western Blot: 1/500 - 1/2000. Immunohistochemistry: 1/100 - 1/300. ELISA: 1/5000. Not yet tested in other applications.
Immunogen	The antiserum was produced against synthesized peptide derived from human Pax-1. AA range:318-367
Specificity	Pax-1 Polyclonal Antibody detects endogenous levels of Pax-1 protein.
Formulation	Liquid in PBS containing 50% glycerol, 0.5% BSA and 0.02% sodium azide.
Storage	Store at -20°C. Avoid repeated freeze-thaw cycles.
Protein Name	Paired box protein Pax-1
Gene Name	PAX1
Cellular localization	Nucleus.
Purification	The antibody was affinity-purified from rabbit antiserum by affinity-chromatography using epitope-specific immunogen.
Clonality	Polyclonal
Concentration	1 mg/ml
Observed band	36kD
Human Gene ID	5075
Human Swiss-Prot Number	P15863
Alternative Names	PAX1; HUP48; Paired box protein Pax-1; HuP48
Background	This gene is a member of the paired box (PAX) family of transcription factors. Members of the PAX family typically contain a paired box domain and a paired-type homeodomain. These genes play critical roles during fetal development. This gene plays a role in pattern formation during embryogenesis and

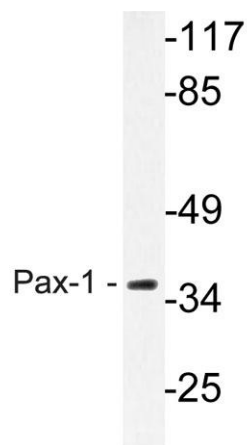
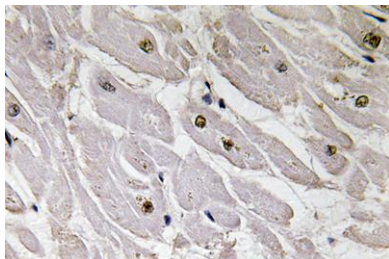


may be essential for development of the vertebral column. This gene is silenced by methylation in ovarian and cervical cancers and may be a tumor suppressor gene. Mutations in this gene are also associated with vertebral malformations. [provided by RefSeq, Mar 2012],



Western Blot analysis of 293T cells using Pax-1 Polyclonal Antibody diluted at 1:500 cells nucleus extracted by Minute TM Cytoplasmic and Nuclear Fractionation kit (SC-003, Invent biotech, MN, USA).

Immunohistochemistry analysis of Pax-1 antibody in paraffin-embedded human heart tissue.



Western blot analysis of lysate from HeLa cells, using Pax-1 antibody.

