

PAK γ (phospho Ser20) rabbit pAb

Cat No.:ES6469

For research use only

Overview

Product Name	PAK γ (phospho Ser20) rabbit pAb
Host species	Rabbit
Applications	WB;IHC;IF;ELISA
Species Cross-Reactivity	Human;Mouse;Rat
Recommended dilutions	Western Blot: 1/500 - 1/2000. Immunohistochemistry: 1/100 - 1/300. ELISA: 1/40000. Not yet tested in other applications.
Immunogen	The antiserum was produced against synthesized peptide derived from human PAK2 around the phosphorylation site of Ser20. AA range:5-54
Specificity	Phospho-PAK γ (S20) Polyclonal Antibody detects endogenous levels of PAK γ protein only when phosphorylated at S20.
Formulation	Liquid in PBS containing 50% glycerol, 0.5% BSA and 0.02% sodium azide.
Storage	Store at -20°C. Avoid repeated freeze-thaw cycles.
Protein Name	Serine/threonine-protein kinase PAK 2
Gene Name	PAK2
Cellular localization	[Serine/threonine-protein kinase PAK 2]: Cytoplasm. MYO18A mediates the cellular distribution of the PAK2-ARHGEF7-GIT1 complex to the inner surface of the cell membrane.; [PAK-2p34]: Nucleus. Cytoplasm, perinuclear region. Membrane; Lipid-anchor. Interaction with ARHGAP10 probably changes PAK-2p34 location to cytoplasmic perinuclear region. Myristoylation changes PAK-2p34 location to the membrane.
Purification	The antibody was affinity-purified from rabbit antiserum by affinity-chromatography using epitope-specific immunogen.
Clonality	Polyclonal
Concentration	1 mg/ml
Observed band	62kD





Human Gene ID

5062

Human Swiss-Prot Number

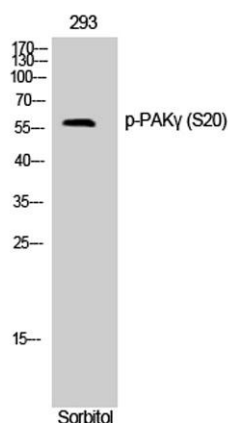
Q13177

Alternative Names

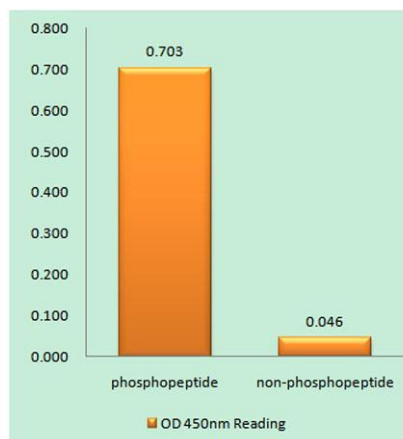
PAK2; Serine/threonine-protein kinase PAK 2; Gamma-PAK; PAK65; S6/H4 kinase; p21-activated kinase 2; PAK-2; p58

Background

The p21 activated kinases (PAK) are critical effectors that link Rho GTPases to cytoskeleton reorganization and nuclear signaling. The PAK proteins are a family of serine/threonine kinases that serve as targets for the small GTP binding proteins, CDC42 and RAC1, and have been implicated in a wide range of biological activities. The protein encoded by this gene is activated by proteolytic cleavage during caspase-mediated apoptosis, and may play a role in regulating the apoptotic events in the dying cell. [provided by RefSeq, Jul 2008],



Western Blot analysis of 293 cells using Phospho-PAK γ (S20) Polyclonal Antibody

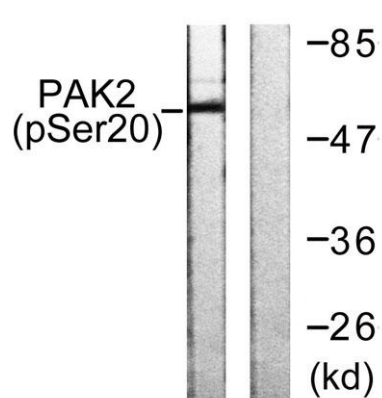
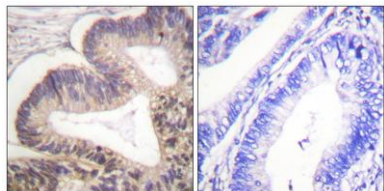


Enzyme-Linked Immunosorbent Assay (Phospho-ELISA) for Immunogen Phosphopeptide (Phospho-left) and Non-Phosphopeptide (Phospho-right), using PAK2 (Phospho-Ser20) Antibody





Immunohistochemistry analysis of paraffin-embedded human colon carcinoma, using PAK2 (Phospho-Ser20) Antibody. The picture on the right is blocked with the phospho peptide.



Western blot analysis of lysates from 293 cells treated with Sorbitol 0.4M 30', using PAK2 (Phospho-Ser20) Antibody. The lane on the right is blocked with the phospho peptide.

