

Ovol1 rabbit pAb

Cat No.:ES6451

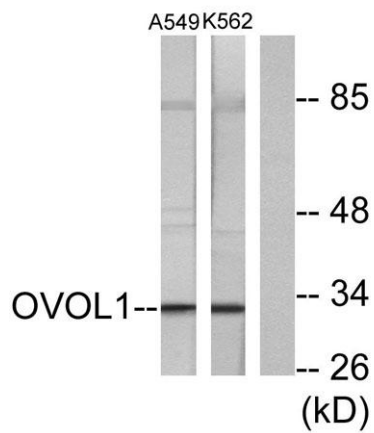
For research use only

Overview

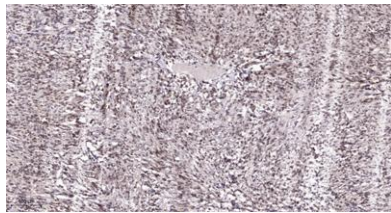
Product Name	Ovol1 rabbit pAb
Host species	Rabbit
Applications	WB;IHC;IF;ELISA
Species Cross-Reactivity	Human;Mouse
Recommended dilutions	Western Blot: 1/500 - 1/2000. Immunohistochemistry: 1/100 - 1/300. ELISA: 1/40000. Not yet tested in other applications.
Immunogen	The antiserum was produced against synthesized peptide derived from human OVOL1. AA range:1-50
Specificity	Ovol1 Polyclonal Antibody detects endogenous levels of Ovol1 protein.
Formulation	Liquid in PBS containing 50% glycerol, 0.5% BSA and 0.02% sodium azide.
Storage	Store at -20°C. Avoid repeated freeze-thaw cycles.
Protein Name	Putative transcription factor Ovo-like 1
Gene Name	OVOL1
Cellular localization	Nucleus .
Purification	The antibody was affinity-purified from rabbit antiserum by affinity-chromatography using epitope-specific immunogen.
Clonality	Polyclonal
Concentration	1 mg/ml
Observed band	33kD
Human Gene ID	5017
Human Swiss-Prot Number	O14753
Alternative Names	OVOL1; Putative transcription factor Ovo-like 1; hOvo1
Background	This gene encodes a putative zinc finger containing transcription factor that is highly similar to homologous protein in Drosophila and mouse. Based on known functions in these species, this protein is likely involved in hair formation and spermatogenesis in human as well. [provided by



RefSeq, Aug 2011],



Western blot analysis of lysates from K562 and A549 cells, using OVOL1 Antibody. The lane on the right is blocked with the synthesized peptide.



Immunohistochemical analysis of paraffin-embedded human Colon cancer. 1, Antibody was diluted at 1:200(4° overnight). 2, Tris-EDTA,pH9.0 was used for antigen retrieval. 3,Secondary antibody was diluted at 1:200(room temperature, 45min).

