



DOR-1 (phospho Ser363) rabbit pAb

Cat No.:ES6441

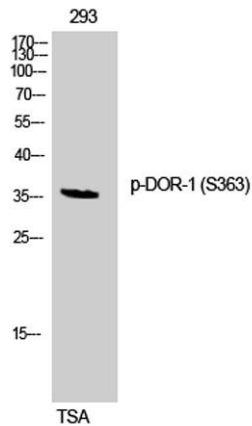
For research use only

Overview

Product Name	DOR-1 (phospho Ser363) rabbit pAb
Host species	Rabbit
Applications	WB;IHC;IF;ELISA
Species Cross-Reactivity	Human;Mouse;Rat
Recommended dilutions	Western Blot: 1/500 - 1/2000. Immunohistochemistry: 1/100 - 1/300. ELISA: 1/5000. Not yet tested in other applications.
Immunogen	The antiserum was produced against synthesized peptide derived from human Opioid Receptor-delta around the phosphorylation site of Ser363. AA range:323-372
Specificity	Phospho-DOR-1 (S363) Polyclonal Antibody detects endogenous levels of DOR-1 protein only when phosphorylated at S363.
Formulation	Liquid in PBS containing 50% glycerol, 0.5% BSA and 0.02% sodium azide.
Storage	Store at -20°C. Avoid repeated freeze-thaw cycles.
Protein Name	Delta-type opioid receptor
Gene Name	OPRD1
Cellular localization	Cell membrane ; Multi-pass membrane protein .
Purification	The antibody was affinity-purified from rabbit antiserum by affinity-chromatography using epitope-specific immunogen.
Clonality	Polyclonal
Concentration	1 mg/ml
Observed band	36kD
Human Gene ID	4985
Human Swiss-Prot Number	P41143
Alternative Names	OPRD1; OPRD; Delta-type opioid receptor; D-OR-1; DOR-1
Background	function:Inhibits neurotransmitter release by reducing calcium ion currents and increasing potassium ion conductance. Highly stereoselective.

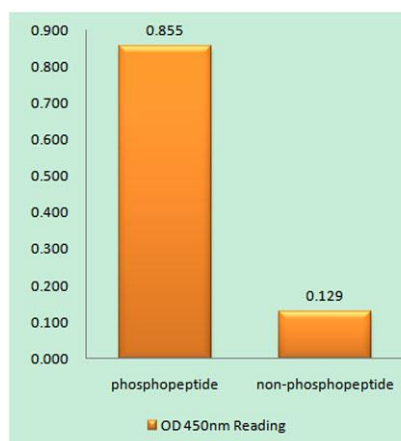
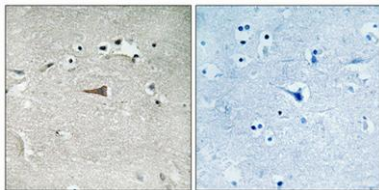


receptor for enkephalins.,online information:Delta
opioid receptor entry,similarity:Belongs to the
G-protein coupled receptor 1
family.,subunit:Interacts with GPRASP1.,



Western Blot analysis of 293 cells using Phospho-DOR-1
(S363) Polyclonal Antibody

Immunohistochemical analysis of paraffin-embedded
Human brain. Antibody was diluted at 1:100(4°
overnight). High-pressure and temperature
Tris-EDTA,pH8.0 was used for antigen retrieval. Negative
contrl (right) obtained from antibody was pre-absorbed by
immunogen peptide.



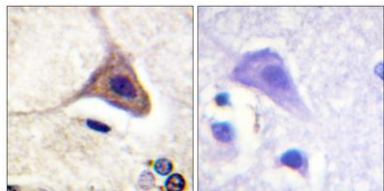
Enzyme-Linked Immunosorbent Assay (Phospho-ELISA) for
Immunogen Phosphopeptide (Phospho-left) and
Non-Phosphopeptide (Phospho-right), using Opioid
Receptor-delta (Phospho-Ser363) Antibody





ELK Biotechnology

Immunohistochemistry analysis of paraffin-embedded human brain, using Opioid Receptor-delta (Phospho-Ser363) Antibody. The picture on the right is blocked with the phospho peptide.



+86-27-59760950

ELKbio@ELKbiotech.com

www.elkbiotech.com

23-2, No.388 Gaoxin 2nd Road,Wuhan East Lake Hi-tech Development Zone, Hubei , P.R.C