

NSF rabbit pAb

Cat No.:ES6419

For research use only

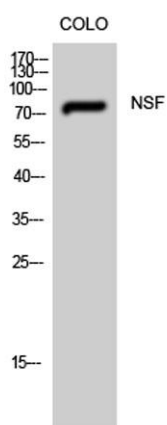
Overview

Product Name	NSF rabbit pAb
Host species	Rabbit
Applications	WB;ELISA
Species Cross-Reactivity	Human;Mouse;Rat
Recommended dilutions	Western Blot: 1/500 - 1/2000. ELISA: 1/40000. Not yet tested in other applications.
Immunogen	Synthesized peptide derived from NSF . at AA range: 110-190
Specificity	NSF Polyclonal Antibody detects endogenous levels of NSF protein.
Formulation	Liquid in PBS containing 50% glycerol, 0.5% BSA and 0.02% sodium azide.
Storage	Store at -20°C. Avoid repeated freeze-thaw cycles.
Protein Name	Vesicle-fusing ATPase
Gene Name	NSF
Cellular localization	Cytoplasm.
Purification	The antibody was affinity-purified from rabbit antiserum by affinity-chromatography using epitope-specific immunogen.
Clonality	Polyclonal
Concentration	1 mg/ml
Observed band	75kD
Human Gene ID	4905
Human Swiss-Prot Number	P46459
Alternative Names	NSF; Vesicle-fusing ATPase; N-ethylmaleimide-sensitive fusion protein; NEM-sensitive fusion protein; Vesicular-fusion protein NSF
Background	catalytic activity:ATP + H(2)O = ADP + phosphate.,cofactor:Binds 1 magnesium ion per subunit.,function:Required for vesicle-mediated transport. Catalyzes the fusion of transport vesicles within the Golgi cisternae. Is also required for





transport from the endoplasmic reticulum to the Golgi stack. Seem to function as a fusion protein required for the delivery of cargo proteins to all compartments of the Golgi stack independent of vesicle origin.,similarity:Belongs to the AAA ATPase family.,subunit:Homohexamer. Interacts with GABARAP and GABARAPL2.,



Western Blot analysis of CoLo cells using NSF Polyclonal Antibody

