



NOS2 (phospho Tyr151) rabbit pAb

Cat No.:ES6398

For research use only

Overview

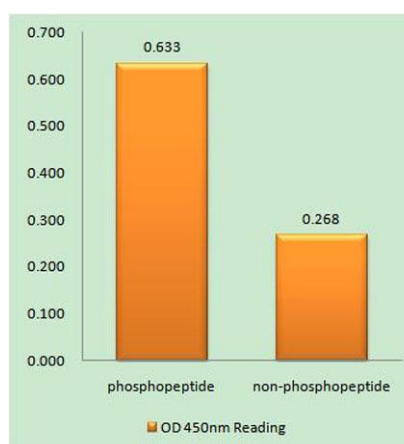
Product Name	NOS2 (phospho Tyr151) rabbit pAb
Host species	Rabbit
Applications	IHC;IF;ELISA
Species Cross-Reactivity	Human;Mouse;Rat
Recommended dilutions	Immunohistochemistry: 1/100 - 1/300. ELISA: 1/10000. Not yet tested in other applications.
Immunogen	The antiserum was produced against synthesized peptide derived from human iNOS around the phosphorylation site of Tyr151. AA range:117-166
Specificity	Phospho-NOS2 (Y151) Polyclonal Antibody detects endogenous levels of NOS2 protein only when phosphorylated at Y151.
Formulation	Liquid in PBS containing 50% glycerol, 0.5% BSA and 0.02% sodium azide.
Storage	Store at -20°C. Avoid repeated freeze-thaw cycles.
Protein Name	Nitric oxide synthase inducible
Gene Name	NOS2, INOS
Cellular localization	Cytoplasm, cytosol . Localizes as discrete foci scattered throughout the cytosol and in the presence of SPSB1 and SPSB4, exhibits a more diffuse cytosolic localization. .
Purification	The antibody was affinity-purified from rabbit antiserum by affinity-chromatography using epitope-specific immunogen.
Clonality	Polyclonal
Concentration	1 mg/ml
Observed band	
Human Gene ID	4843
Human Swiss-Prot Number	P35228
Alternative Names	NOS2; NOS2A; Nitric oxide synthase; inducible; Hepatocyte NOS; HEP-NOS; Inducible NO synthase; Inducible NOS; iNOS; NOS type II; Peptidyl-cysteine S-nitrosylase NOS2



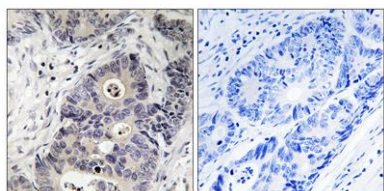


Background

Nitric oxide is a reactive free radical which acts as a biologic mediator in several processes, including neurotransmission and antimicrobial and antitumoral activities. This gene encodes a nitric oxide synthase which is expressed in liver and is inducible by a combination of lipopolysaccharide and certain cytokines. Three related pseudogenes are located within the Smith-Magenis syndrome region on chromosome 17. [provided by RefSeq, Jul 2008],



Enzyme-Linked Immunosorbent Assay (Phospho-ELISA) for Immunogen Phosphopeptide (Phospho-left) and Non-Phosphopeptide (Phospho-right), using iNOS (Phospho-Tyr151) Antibody



Immunohistochemistry analysis of paraffin-embedded human colon carcinoma, using iNOS (Phospho-Tyr151) Antibody. The picture on the right is blocked with the phospho peptide.

