

NMBR rabbit pAb

Cat No.:ES6395

For research use only

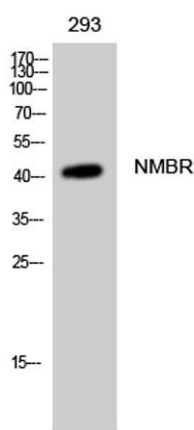
Overview

Product Name	NMBR rabbit pAb
Host species	Rabbit
Applications	WB;IF;ELISA
Species Cross-Reactivity	Human;Mouse;Rat
Recommended dilutions	Western Blot: 1/500 - 1/2000. Immunofluorescence: 1/200 - 1/1000. ELISA: 1/5000. Not yet tested in other applications.
Immunogen	The antiserum was produced against synthesized peptide derived from human NMBR. AA range:221-270
Specificity	NMBR Polyclonal Antibody detects endogenous levels of NMBR protein.
Formulation	Liquid in PBS containing 50% glycerol, 0.5% BSA and 0.02% sodium azide.
Storage	Store at -20°C. Avoid repeated freeze-thaw cycles.
Protein Name	Neuromedin-B receptor
Gene Name	NMBR
Cellular localization	Cell membrane ; Multi-pass membrane protein .
Purification	The antibody was affinity-purified from rabbit antiserum by affinity-chromatography using epitope-specific immunogen.
Clonality	Polyclonal
Concentration	1 mg/ml
Observed band	43kD
Human Gene ID	4829
Human Swiss-Prot Number	P28336
Alternative Names	NMBR; Neuromedin-B receptor; NMB-R; Epididymis tissue protein Li 185a; Neuromedin-B-preferring bombesin receptor
Background	This gene encodes a 7-transmembrane G protein-coupled receptor that binds neuromedin B, which is a growth factor and mitogen for gastrointestinal epithelial tissue and for normal and



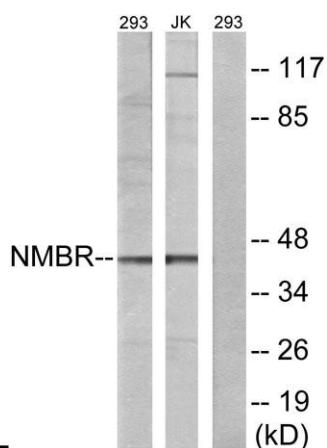
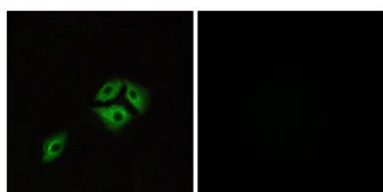


neoplastic lung. This receptor may play a role in smooth muscle contraction, neuronal responses, and the regulation of cell growth. Antagonists of this receptor have a potential therapeutic use in inhibiting tumor cell growth. Polymorphisms in this gene may be associated with a susceptibility for schizophrenia. Alternative splicing of this gene results in multiple transcript variants. [provided by RefSeq, Apr 2016],



Western Blot analysis of 293 cells using NMBR Polyclonal Antibody

Immunofluorescence analysis of A549 cells, using NMBR Antibody. The picture on the right is blocked with the synthesized peptide.



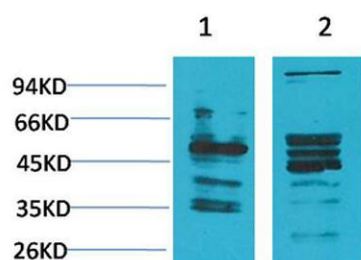
Western blot analysis of lysates from 293 and Jurkat cells, using NMBR Antibody. The lane on the right is blocked with the synthesized peptide.





ELK Biotechnology

Western blot analysis of 1) Human Brain Tissue, 2) Rat Brain Tissue using NMBR Polyclonal Antibody. Secondary antibody(catalog#:RS0002) was diluted at 1:20000



+86-27-59760950

ELKbio@ELKbiotech.com

www.elkbiotech.com

23-2, No.388 Gaoxin 2nd Road,Wuhan East Lake Hi-tech Development Zone, Hubei , P.R.C