

IκB-ε rabbit pAb

Cat No.:ES6387

For research use only

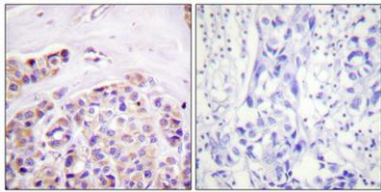
Overview

Product Name	IκB-ε rabbit pAb
Host species	Rabbit
Applications	WB;IHC;IF;ELISA
Species Cross-Reactivity	Human;Mouse;Rat
Recommended dilutions	Western Blot: 1/500 - 1/2000. Immunohistochemistry: 1/100 - 1/300. Immunofluorescence: 1/200 - 1/1000. ELISA: 1/40000. Not yet tested in other applications.
Immunogen	The antiserum was produced against synthesized peptide derived from human IkappaB-epsilon. AA range:131-180
Specificity	IκB-ε Polyclonal Antibody detects endogenous levels of IκB-ε protein.
Formulation	Liquid in PBS containing 50% glycerol, 0.5% BSA and 0.02% sodium azide.
Storage	Store at -20°C. Avoid repeated freeze-thaw cycles.
Protein Name	NF-kappa-B inhibitor epsilon
Gene Name	NFKBIE
Cellular localization	Cytoplasm .
Purification	The antibody was affinity-purified from rabbit antiserum by affinity-chromatography using epitope-specific immunogen.
Clonality	Polyclonal
Concentration	1 mg/ml
Observed band	45kD
Human Gene ID	4794
Human Swiss-Prot Number	O00221
Alternative Names	NFKBIE; IKBE; NF-kappa-B inhibitor epsilon; NF-kappa-BIE; I-kappa-B-epsilon; IκB-E; IκB-epsilon; IkappaBepsilon
Background	The protein encoded by this gene binds to components of NF-kappa-B, trapping the complex in the cytoplasm and preventing it from activating

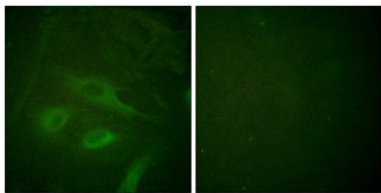


genes in the nucleus. Phosphorylation of the encoded protein targets it for destruction by the ubiquitin pathway, which activates NF-kappa-B by making it available to translocate to the nucleus. [provided by RefSeq, Sep 2011],

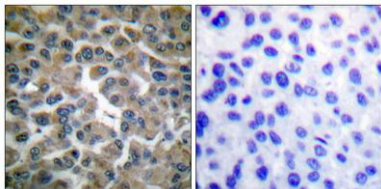
Immunohistochemical analysis of paraffin-embedded Human breast cancer. Antibody was diluted at 1:100(4° overnight). High-pressure and temperature Tris-EDTA,pH8.0 was used for antigen retrieval. Negative contrl (right) obtained from antibody was pre-absor

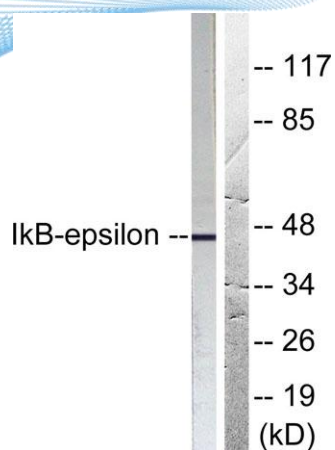


Immunofluorescence analysis of HeLa cells, using IkappaB-epsilon Antibody. The picture on the right is blocked with the synthesized peptide.



Immunohistochemistry analysis of paraffin-embedded human breast carcinoma tissue, using IkappaB-epsilon Antibody. The picture on the right is blocked with the synthesized peptide.





Western blot analysis of lysates from HeLa cells, treated with TNF- α 20ng/ml 5', using I κ B-epsilon Antibody. The lane on the right is blocked with the synthesized peptide.

