

NDUFS1 rabbit pAb

Cat No.:ES6347

For research use only

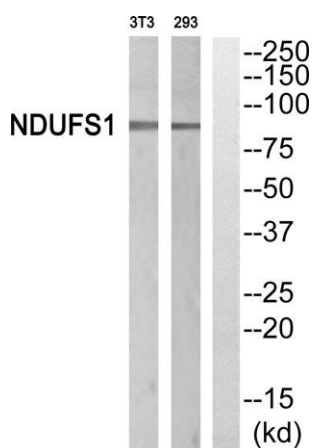
Overview

Product Name	NDUFS1 rabbit pAb
Host species	Rabbit
Applications	WB;IHC;IF;ELISA
Species Cross-Reactivity	Human;Mouse;Rat
Recommended dilutions	Western Blot: 1/500 - 1/2000. Immunohistochemistry: 1/100 - 1/300. ELISA: 1/40000. Not yet tested in other applications.
Immunogen	The antiserum was produced against synthesized peptide derived from human NDUFS1. AA range:620-669
Specificity	NDUFS1 Polyclonal Antibody detects endogenous levels of NDUFS1 protein.
Formulation	Liquid in PBS containing 50% glycerol, 0.5% BSA and 0.02% sodium azide.
Storage	Store at -20°C. Avoid repeated freeze-thaw cycles.
Protein Name	NADH-ubiquinone oxidoreductase 75 kDa subunit mitochondrial
Gene Name	NDUFS1
Cellular localization	Mitochondrion inner membrane ; Peripheral membrane protein ; Matrix side .
Purification	The antibody was affinity-purified from rabbit antiserum by affinity-chromatography using epitope-specific immunogen.
Clonality	Polyclonal
Concentration	1 mg/ml
Observed band	80kD
Human Gene ID	4719
Human Swiss-Prot Number	P28331
Alternative Names	NDUFS1; NADH-ubiquinone oxidoreductase 75 kDa subunit; mitochondrial; Complex I-75kD; CI-75kD
Background	The protein encoded by this gene belongs to the complex I 75 kDa subunit family. Mammalian complex I is composed of 45 different subunits. It

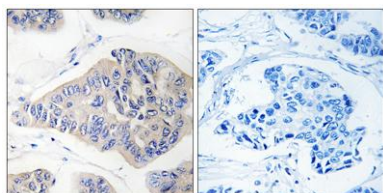




located at the mitochondrial inner membrane. This protein has NADH dehydrogenase activity and oxidoreductase activity. It transfers electrons from NADH to the respiratory chain. The immediate electron acceptor for the enzyme is believed to be ubiquinone. This protein is the largest subunit of complex I and it is a component of the iron-sulfur (IP) fragment of the enzyme. It may form part of the active site crevice where NADH is oxidized. Mutations in this gene are associated with complex I deficiency. Several transcript variants encoding different isoforms have been found for this gene. [provided by RefSeq, Jan 2011],



Western blot analysis of NDUF51 Antibody. The lane on the right is blocked with the NDUF51 peptide.

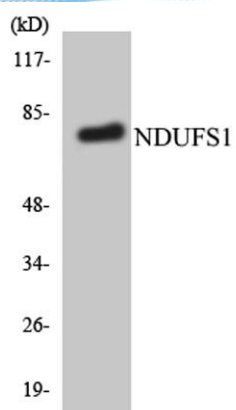


Immunohistochemistry analysis of paraffin-embedded human breast carcinoma, using NDUF51 Antibody. The lane on the right is blocked with the NDUF51 peptide.





ELK Biotechnology



Western blot analysis of the lysates from HepG2 cells using NDUFS1 antibody.



+86-27-59760950

ELKbio@ELKbiotech.com

www.elkbiotech.com

23-2, No.388 Gaoxin 2nd Road, Wuhan East Lake Hi-tech Development Zone, Hubei, P.R.C.