



## c-Myb (phospho Ser12) rabbit pAb

Cat No.:ES6296

For research use only

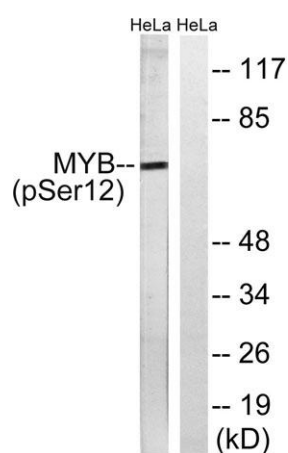
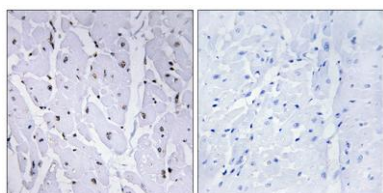
### Overview

Product Name	c-Myb (phospho Ser12) rabbit pAb
Host species	Rabbit
Applications	WB;IHC;IF;ELISA
Species Cross-Reactivity	Human;Mouse
Recommended dilutions	Western Blot: 1/500 - 1/2000. Immunohistochemistry: 1/100 - 1/300. ELISA: 1/5000. Not yet tested in other applications.
Immunogen	The antiserum was produced against synthesized peptide derived from human MYB around the phosphorylation site of Ser12. AA range:1-50
Specificity	Phospho-c-Myb (S12) Polyclonal Antibody detects endogenous levels of c-Myb protein only when phosphorylated at S12.
Formulation	Liquid in PBS containing 50% glycerol, 0.5% BSA and 0.02% sodium azide.
Storage	Store at -20°C. Avoid repeated freeze-thaw cycles.
Protein Name	Transcriptional activator Myb
Gene Name	MYB
Cellular localization	Nucleus .
Purification	The antibody was affinity-purified from rabbit antiserum by affinity-chromatography using epitope-specific immunogen.
Clonality	Polyclonal
Concentration	1 mg/ml
Observed band	65kD
Human Gene ID	4602
Human Swiss-Prot Number	P10242
Alternative Names	MYB; Transcriptional activator Myb; Proto-oncogene c-Myb
Background	This gene encodes a protein with three HTH DNA-binding domains that functions as a transcription regulator. This protein plays an essential role in the regulation of hematopoiesis.



This gene may be aberrantly expressed or rearranged or undergo translocation in leukemias and lymphomas, and is considered to be an oncogene. Alternative splicing results in multiple transcript variants. [provided by RefSeq, Jan 2016],

Immunohistochemistry analysis of paraffin-embedded human heart, using MYB (Phospho-Ser12) Antibody. The picture on the right is blocked with the phospho peptide.



Western blot analysis of lysates from HeLa cells treated with Hu 2nM 24h, using MYB (Phospho-Ser12) Antibody. The lane on the right is blocked with the phospho peptide.

