



ELK Biotechnology

Moesin/Ezrin/Radixin (phospho Thr558) rabbit pAb

Cat No.:ES6283

For research use only

Overview

Product Name	Moesin/Ezrin/Radixin (phospho Thr558) rabbit pAb
Host species	Rabbit
Applications	WB;IHC;IF;ELISA
Species Cross-Reactivity	Human;Mouse;Rat
Recommended dilutions	Western Blot: 1/500 - 1/2000. Immunohistochemistry: 1/100 - 1/300. Immunofluorescence: 1/200 - 1/1000. ELISA: 1/5000. Not yet tested in other applications.
Immunogen	The antiserum was produced against synthesized peptide derived from human Moesin/Ezrin/Radixin around the phosphorylation site of Thr558. AA range:524-573
Specificity	Phospho-Moesin/Ezrin/Radixin (T558) Polyclonal Antibody detects endogenous levels of Moesin/Ezrin/Radixin protein only when phosphorylated at T558.
Formulation	Liquid in PBS containing 50% glycerol, 0.5% BSA and 0.02% sodium azide.
Storage	Store at -20°C. Avoid repeated freeze-thaw cycles.
Protein Name	Moesin
Gene Name	MSN
Cellular localization	Cell membrane ; Peripheral membrane protein ; Cytoplasmic side . Cytoplasm, cytoskeleton . Apical cell membrane ; Peripheral membrane protein ; Cytoplasmic side . Cell projection, microvillus membrane ; Peripheral membrane protein ; Cytoplasmic side . Cel
Purification	The antibody was affinity-purified from rabbit antiserum by affinity-chromatography using epitope-specific immunogen.
Clonality	Polyclonal
Concentration	1 mg/ml



+86-27-59760950

ELKbio@ELKbiotech.com

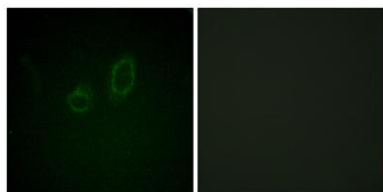
www.elkbiotech.com

23-2, No.388 Gaoxin 2nd Road,Wuhan East Lake Hi-tech Development Zone, Hubei , P.R.C

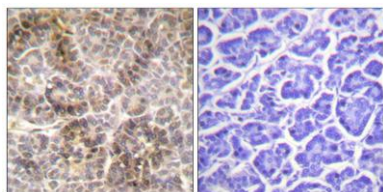


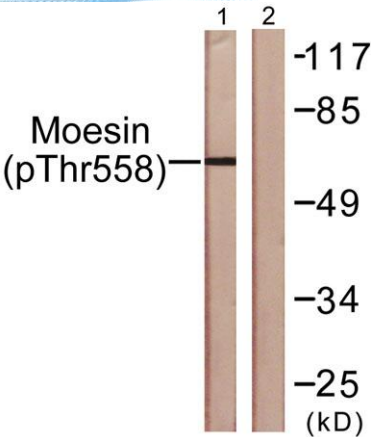
Observed band	67kD
Human Gene ID	4478/5962
Human Swiss-Prot Number	P26038/P35241/P15311
Alternative Names	MSN; Moesin; Membrane-organizing extension spike protein; RDX; Radixin; EZR; VIL2; Ezrin; Cytovillin; Villin-2; p81
Background	<p>Moesin (for membrane-organizing extension spike protein) is a member of the ERM family which includes ezrin and radixin. ERM proteins appear to function as cross-linkers between plasma membranes and actin-based cytoskeletons. Moesin is localized to filopodia and other membranous protrusions that are important for cell-cell recognition and signaling and for cell movement. [provided by RefSeq, Jul 2008],</p>

Immunofluorescence analysis of A549 cells, using Moesin/Ezrin/Radixin (Phospho-Thr558) Antibody. The picture on the right is blocked with the phospho peptide.



Immunohistochemistry analysis of paraffin-embedded human pancreas, using Moesin/Ezrin/Radixin (Phospho-Thr558) Antibody. The picture on the right is blocked with the phospho peptide.





Western blot analysis of lysates from NIH/3T3 cells, using Moesin/Ezrin/Radixin (Phospho-Thr558) Antibody. The lane on the right is blocked with the phospho peptide.

