

MMP-8 rabbit pAb

Cat No.:ES6260

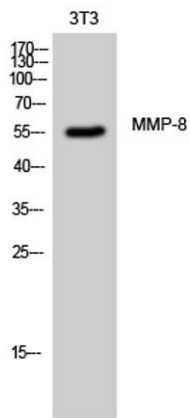
For research use only

Overview

Product Name	MMP-8 rabbit pAb
Host species	Rabbit
Applications	WB;IHC;IF;ELISA
Species Cross-Reactivity	Human;Mouse;Rat
Recommended dilutions	Western Blot: 1/500 - 1/2000. Immunohistochemistry: 1/100 - 1/300. ELISA: 1/20000. Not yet tested in other applications.
Immunogen	The antiserum was produced against synthesized peptide derived from human MMP-8. AA range:418-467
Specificity	MMP-8 Polyclonal Antibody detects endogenous levels of MMP-8 protein.
Formulation	Liquid in PBS containing 50% glycerol, 0.5% BSA and 0.02% sodium azide.
Storage	Store at -20°C. Avoid repeated freeze-thaw cycles.
Protein Name	Neutrophil collagenase
Gene Name	MMP8
Cellular localization	Cytoplasmic granule. Secreted, extracellular space, extracellular matrix . Stored in intracellular granules.
Purification	The antibody was affinity-purified from rabbit antiserum by affinity-chromatography using epitope-specific immunogen.
Clonality	Polyclonal
Concentration	1 mg/ml
Observed band	55kD
Human Gene ID	4317
Human Swiss-Prot Number	P22894
Alternative Names	MMP8; CLG1; Neutrophil collagenase; Matrix metalloproteinase-8; MMP-8; PMNL collagenase; PMNL-CL
Background	matrix metalloproteinase 8(MMP8) Homo sapiens This gene encodes a member of the matrix metalloproteinase (MMP) family of proteins. These

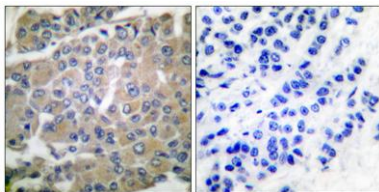


proteins are involved in the breakdown of extracellular matrix in embryonic development, reproduction, and tissue remodeling, as well as in disease processes, such as arthritis and metastasis. Proteolysis at different sites on this protein results in multiple active forms of the enzyme with distinct N-termini. This protein functions in the degradation of type I, II and III collagens. The gene is part of a cluster of MMP genes which localize to chromosome 11q22.3. Alternative splicing results in multiple transcript variants. [provided by RefSeq, Jan 2015],



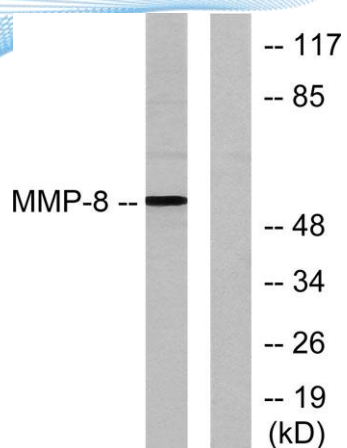
Western Blot analysis of 3T3 cells using MMP-8 Polyclonal Antibody

Immunohistochemistry analysis of paraffin-embedded human breast carcinoma tissue, using MMP-8 Antibody. The picture on the right is blocked with the synthesized peptide.





ELK Biotechnology



Western blot analysis of lysates from NIH/3T3 cells, using MMP-8 Antibody. The lane on the right is blocked with the synthesized peptide.



+86-27-59760950

ELKbio@ELKbiotech.com

www.elkbiotech.com

23-2, No.388 Gaoxin 2nd Road, Wuhan East Lake Hi-tech Development Zone, Hubei, P.R.C.