

Arylsulfatase A rabbit pAb

Cat No.:ES6164

For research use only

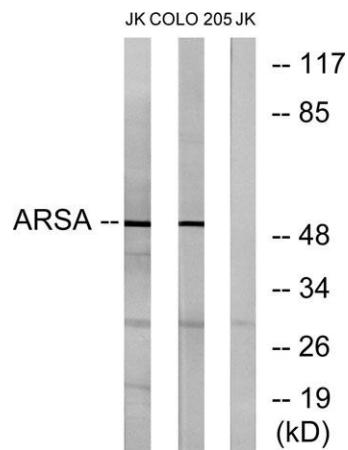
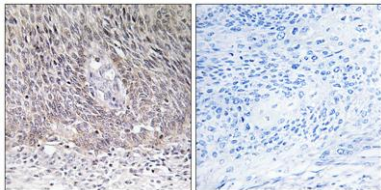
Overview

Product Name	Arylsulfatase A rabbit pAb
Host species	Rabbit
Applications	WB;IHC;IF;ELISA
Species Cross-Reactivity	Human;Mouse;Rat
Recommended dilutions	Western Blot: 1/500 - 1/2000. Immunohistochemistry: 1/100 - 1/300. ELISA: 1/20000. Not yet tested in other applications.
Immunogen	The antiserum was produced against synthesized peptide derived from human ARSA. AA range:251-300
Specificity	Arylsulfatase A Polyclonal Antibody detects endogenous levels of Arylsulfatase A protein.
Formulation	Liquid in PBS containing 50% glycerol, 0.5% BSA and 0.02% sodium azide.
Storage	Store at -20°C. Avoid repeated freeze-thaw cycles.
Protein Name	Arylsulfatase A
Gene Name	ARSA
Cellular localization	Endoplasmic reticulum . Lysosome .
Purification	The antibody was affinity-purified from rabbit antiserum by affinity-chromatography using epitope-specific immunogen.
Clonality	Polyclonal
Concentration	1 mg/ml
Observed band	54kD
Human Gene ID	410
Human Swiss-Prot Number	P15289
Alternative Names	ARSA; Arylsulfatase A; ASA; Cerebroside-sulfatase
Background	The protein encoded by this gene hydrolyzes cerebroside sulfate to cerebroside and sulfate. Defects in this gene lead to metachromatic leucodystrophy (MLD), a progressive demyelination disease which results in a variety of neurological symptoms and ultimately death. Alternatively



spliced transcript variants have been described for this gene. [provided by RefSeq, Dec 2010],

Immunohistochemistry analysis of paraffin-embedded human cervix carcinoma tissue, using ARSA Antibody. The picture on the right is blocked with the synthesized peptide.



Western blot analysis of lysates from Jurkat and COLO cells, using ARSA Antibody. The lane on the right is blocked with the synthesized peptide.

