

# Hepatic Lipase rabbit pAb

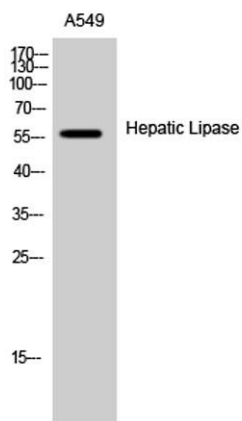
Cat No.:ES6119

For research use only

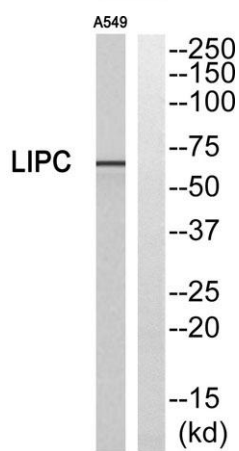
## Overview

Product Name	Hepatic Lipase rabbit pAb
Host species	Rabbit
Applications	WB;IHC;IF;ELISA
Species Cross-Reactivity	Human;Rat;Mouse;
Recommended dilutions	Western Blot: 1/500 - 1/2000. Immunohistochemistry: 1/100 - 1/300. ELISA: 1/10000. Not yet tested in other applications.
Immunogen	The antiserum was produced against synthesized peptide derived from human LIPC. AA range:301-350
Specificity	Hepatic Lipase Polyclonal Antibody detects endogenous levels of Hepatic Lipase protein.
Formulation	Liquid in PBS containing 50% glycerol, 0.5% BSA and 0.02% sodium azide.
Storage	Store at -20°C. Avoid repeated freeze-thaw cycles.
Protein Name	Hepatic triacylglycerol lipase
Gene Name	LIPC
Cellular localization	Secreted .
Purification	The antibody was affinity-purified from rabbit antiserum by affinity-chromatography using epitope-specific immunogen.
Clonality	Polyclonal
Concentration	1 mg/ml
Observed band	56kD
Human Gene ID	3990
Human Swiss-Prot Number	P11150
Alternative Names	LIPC; HTGL; Hepatic triacylglycerol lipase; HL; Hepatic lipase; Lipase member C
Background	LIPC encodes hepatic triglyceride lipase, which is expressed in liver. LIPC has the dual functions of triglyceride hydrolase and ligand/bridging factor for receptor-mediated lipoprotein uptake. [provided by RefSeq, Jul 2008],

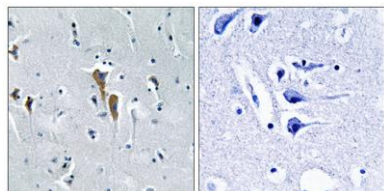




Western Blot analysis of A549 cells using Hepatic Lipase Polyclonal Antibody



Western blot analysis of LIPC Antibody. The lane on the right is blocked with the LIPC peptide.

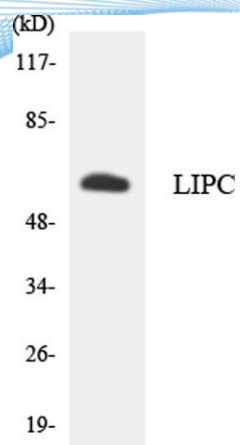


Immunohistochemistry analysis of paraffin-embedded human brain, using LIPC Antibody. The lane on the right is blocked with the LIPC peptide.





**ELK Biotechnology**



Western blot analysis of the lysates from HT-29 cells using LIPC antibody.



+86-27-59760950

[ELKbio@ELKbiotech.com](mailto:ELKbio@ELKbiotech.com)

[www.elkbiotech.com](http://www.elkbiotech.com)

23-2, No.388 Gaoxin 2nd Road, Wuhan East Lake Hi-tech Development Zone, Hubei, P.R.C.