

Laminin α -3 rabbit pAb

Cat No.:ES6075

For research use only

Overview

Product Name	Laminin α -3 rabbit pAb
Host species	Rabbit
Applications	WB;IHC;IF;ELISA
Species Cross-Reactivity	Human;Mouse;Rat
Recommended dilutions	Western Blot: 1/500 - 1/2000. Immunohistochemistry: 1/100 - 1/300. Immunofluorescence: 1/200 - 1/1000. ELISA: 1/40000. Not yet tested in other applications.
Immunogen	The antiserum was produced against synthesized peptide derived from human LAMA3. AA range:2571-2620
Specificity	Laminin α -3 Polyclonal Antibody detects endogenous levels of Laminin α -3 protein.
Formulation	Liquid in PBS containing 50% glycerol, 0.5% BSA and 0.02% sodium azide.
Storage	Store at -20°C. Avoid repeated freeze-thaw cycles.
Protein Name	Laminin subunit alpha-3
Gene Name	LAMA3
Cellular localization	Secreted, extracellular space, extracellular matrix, basement membrane. Major component.
Purification	The antibody was affinity-purified from rabbit antiserum by affinity-chromatography using epitope-specific immunogen.
Clonality	Polyclonal
Concentration	1 mg/ml
Observed band	120 60kD
Human Gene ID	3909
Human Swiss-Prot Number	Q16787
Alternative Names	LAMA3; LAMNA; Laminin subunit alpha-3; Epiligrin 170 kDa subunit; E170; Epiligrin subunit alpha; Kalinin subunit alpha; Laminin-5 subunit alpha; Laminin-6 subunit alpha; Laminin-7 subunit alpha; Nicein subunit alpha

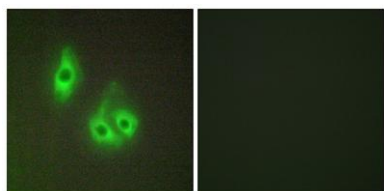




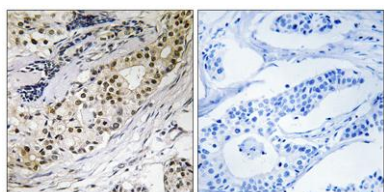
Background

The protein encoded by this gene belongs to the laminin family of secreted molecules. Laminins are heterotrimeric molecules that consist of alpha, beta, and gamma subunits that assemble through a coiled-coil domain. Laminins are essential for formation and function of the basement membrane and have additional functions in regulating cell migration and mechanical signal transduction. This gene encodes an alpha subunit and is responsive to several epithelial-mesenchymal regulators including keratinocyte growth factor, epidermal growth factor and insulin-like growth factor. Mutations in this gene have been identified as the cause of Herlitz type junctional epidermolysis bullosa and laryngoonychocutaneous syndrome. Alternative splicing and alternative promoter usage result in multiple transcript variants. [provided by RefSeq, Dec 2014],

Immunofluorescence analysis of HepG2 cells, using LAMA3 Antibody. The picture on the right is blocked with the synthesized peptide.

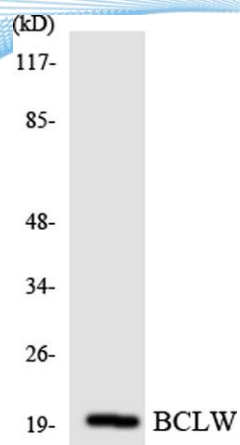


Immunohistochemistry analysis of paraffin-embedded human colon carcinoma tissue, using LAMA3 Antibody. The picture on the right is blocked with the synthesized peptide.





ELK Biotechnology



Western blot analysis of the lysates from HeLa cells using BCLW antibody.



+86-27-59760950

ELKbio@ELKbiotech.com

www.elkbiotech.com

23-2, No.388 Gaoxin 2nd Road, Wuhan East Lake Hi-tech Development Zone, Hubei, P.R.C.