



BSX rabbit pAb

Cat No.:ES6067

For research use only

Overview

Product Name	BSX rabbit pAb
Host species	Rabbit
Applications	WB;ELISA
Species Cross-Reactivity	Human;Mouse;Rat
Recommended dilutions	Western Blot: 1/500 - 1/2000. ELISA: 1/5000. Not yet tested in other applications.
Immunogen	Synthesized peptide derived from BSX . at AA range: 150-230
Specificity	BSX Polyclonal Antibody detects endogenous levels of BSX protein.
Formulation	Liquid in PBS containing 50% glycerol, 0.5% BSA and 0.02% sodium azide.
Storage	Store at -20°C. Avoid repeated freeze-thaw cycles.
Protein Name	Brain-specific homeobox protein homolog
Gene Name	BSX
Cellular localization	Nucleus .
Purification	The antibody was affinity-purified from rabbit antiserum by affinity-chromatography using epitope-specific immunogen.
Clonality	Polyclonal
Concentration	1 mg/ml
Observed band	26kD
Human Gene ID	390259
Human Swiss-Prot Number	Q3C1V8
Alternative Names	BSX; BSX1; Brain-specific homeobox protein homolog
Background	function:DNA binding protein that function as transcriptional activator. Is essential for normal postnatal growth and nursing. Is an essential factor for neuronal neuropeptide Y and agouti-related peptide function and locomotory behavior in the control of energy balance.,online information:Of fidgets and food -Issue 85 of August

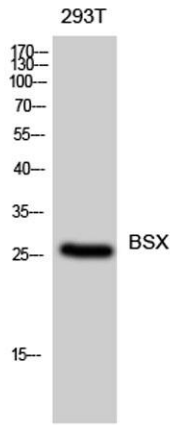




ELK Biotechnology

2007,similarity:Belongs to the distal-less homeobox family.,similarity:Contains 1 homeobox DNA-binding domain.,

Western Blot analysis of 293T cells using BSX Polyclonal Antibody diluted at 1:500



+86-27-59760950

ELKbio@ELKbiotech.com

www.elkbiotech.com

23-2, No.388 Gaoxin 2nd Road,Wuhan East Lake Hi-tech Development Zone, Hubei , P.R.C