

MCT12 rabbit pAb

Cat No.:ES6038

For research use only

Overview

Product Name	MCT12 rabbit pAb
Host species	Rabbit
Applications	WB;IHC;IF;ELISA
Species Cross-Reactivity	Human;Mouse
Recommended dilutions	Western Blot: 1/500 - 1/2000. Immunohistochemistry: 1/100 - 1/300. ELISA: 1/20000. Not yet tested in other applications.
Immunogen	The antiserum was produced against synthesized peptide derived from human MOT12. AA range:115-164
Specificity	MCT12 Polyclonal Antibody detects endogenous levels of MCT12 protein.
Formulation	Liquid in PBS containing 50% glycerol, 0.5% BSA and 0.02% sodium azide.
Storage	Store at -20°C. Avoid repeated freeze-thaw cycles.
Protein Name	Monocarboxylate transporter 12
Gene Name	SLC16A12
Cellular localization	Cell membrane ; Multi-pass membrane protein .
Purification	The antibody was affinity-purified from rabbit antiserum by affinity-chromatography using epitope-specific immunogen.
Clonality	Polyclonal
Concentration	1 mg/ml
Observed band	53kD
Human Gene ID	387700
Human Swiss-Prot Number	Q6ZSM3
Alternative Names	SLC16A12; MCT12; Monocarboxylate transporter 12; MCT 12; Solute carrier family 16 member 12
Background	This gene encodes a transmembrane transporter that likely plays a role in monocarboxylic acid transport. A mutation in this gene has been associated with juvenile cataracts with microcornea and renal glucosuria. [provided by RefSeq, Mar

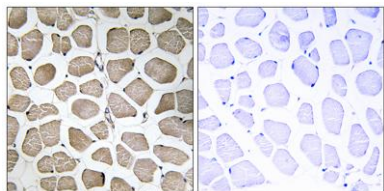




ELK Biotechnology

2010],

Immunohistochemistry analysis of paraffin-embedded human skeletal muscle tissue, using MOT12 Antibody. The picture on the right is blocked with the synthesized peptide.



+86-27-59760950

ELKbio@ELKbiotech.com

www.elkbiotech.com

23-2, No.388 Gaoxin 2nd Road,Wuhan East Lake Hi-tech Development Zone, Hubei , P.R.C