

# Jun D (phospho Ser255) rabbit pAb

Cat No.:ES5986

For research use only

## Overview

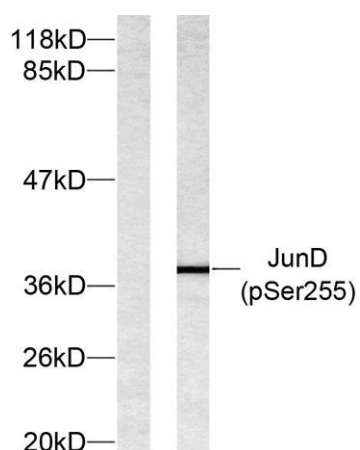
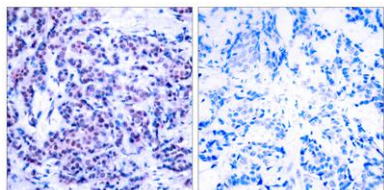
Product Name	Jun D (phospho Ser255) rabbit pAb
Host species	Rabbit
Applications	WB;IHC;IF;IP;ELISA
Species Cross-Reactivity	Human;Mouse;Rat
Recommended dilutions	Western Blot: 1/500 - 1/2000. Immunohistochemistry: 1/100 - 1/300. Immunoprecipitation: 2-5 ug/mg lysate. ELISA: 1/20000. Not yet tested in other applications.
Immunogen	The antiserum was produced against synthesized peptide derived from human JunD around the phosphorylation site of Ser255. AA range:222-271
Specificity	Phospho-Jun D (S255) Polyclonal Antibody detects endogenous levels of Jun D protein only when phosphorylated at S255.
Formulation	Liquid in PBS containing 50% glycerol, 0.5% BSA and 0.02% sodium azide.
Storage	Store at -20°C. Avoid repeated freeze-thaw cycles.
Protein Name	Transcription factor jun-D
Gene Name	JUND
Cellular localization	Nucleus.
Purification	The antibody was affinity-purified from rabbit antiserum by affinity-chromatography using epitope-specific immunogen.
Clonality	Polyclonal
Concentration	1 mg/ml
Observed band	
Human Gene ID	3727
Human Swiss-Prot Number	P17535
Alternative Names	JUND; Transcription factor jun-D
Background	The protein encoded by this intronless gene is a member of the JUN family, and a functional component of the AP1 transcription factor complex. This protein has been proposed to protect cells from





p53-dependent senescence and apoptosis.  
Alternative translation initiation site usage results in  
the production of different isoforms  
(PMID:12105216). [provided by RefSeq, Nov 2013],

Immunohistochemistry analysis of paraffin-embedded  
human breast carcinoma, using JunD (Phospho-Ser255)  
Antibody. The picture on the right is blocked with the  
phospho peptide.



Western blot analysis of lysates from 293 cells treated  
with Forskolin, using JunD (Phospho-Ser255) Antibody.  
The lane on the left is blocked with the phospho peptide.

