

# Integrin $\beta$ 1 rabbit pAb

Cat No.:ES5949

For research use only

## Overview

Product Name	Integrin $\beta$ 1 rabbit pAb
Host species	Rabbit
Applications	WB;IHC;IF;ELISA
Species Cross-Reactivity	Human;Mouse;Rat
Recommended dilutions	Western Blot: 1/500 - 1/2000. Immunohistochemistry: 1/100 - 1/300. Immunofluorescence: 1/200 - 1/1000. ELISA: 1/5000. Not yet tested in other applications.
Immunogen	The antiserum was produced against synthesized peptide derived from human Integrin beta1. AA range:746-795
Specificity	Integrin $\beta$ 1 Polyclonal Antibody detects endogenous levels of Integrin $\beta$ 1 protein.
Formulation	Liquid in PBS containing 50% glycerol, 0.5% BSA and 0.02% sodium azide.
Storage	Store at -20°C. Avoid repeated freeze-thaw cycles.
Protein Name	Integrin beta-1
Gene Name	ITGB1
Cellular localization	Cell membrane ; Single-pass type I membrane protein . Cell projection, invadopodium membrane ; Single-pass type I membrane protein . Cell projection, ruffle membrane ; Single-pass type I membrane protein . Recycling endosome . Melanosome . Cleavage furrow
Purification	The antibody was affinity-purified from rabbit antiserum by affinity-chromatography using epitope-specific immunogen.
Clonality	Polyclonal
Concentration	1 mg/ml
Observed band	140kD
Human Gene ID	3688
Human Swiss-Prot Number	P05556
Alternative Names	ITGB1; FNRB; MDF2; MSK12; Integrin beta-1;





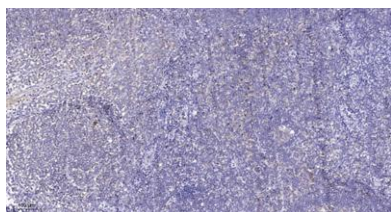
## Background

Fibronectin receptor subunit beta; VLA-4 subunit beta; CD antigen CD29

Integrins are heterodimeric proteins made up of alpha and beta subunits. At least 18 alpha and 8 beta subunits have been described in mammals. Integrin family members are membrane receptors involved in cell adhesion and recognition in a variety of processes including embryogenesis, hemostasis, tissue repair, immune response and metastatic diffusion of tumor cells. This gene encodes a beta subunit. Multiple alternatively spliced transcript variants which encode different protein isoforms have been found for this gene. [provided by RefSeq, Jul 2008],

Western blot analysis of lysates from Jurkat cells, using Integrin beta1 Antibody. The lane on the right is blocked with the synthesized peptide.

## INTEGRIN $\beta$ 1—



Immunohistochemical analysis of paraffin-embedded human tonsil. 1, Tris-EDTA, pH 9.0 was used for antigen retrieval. 2 Antibody was diluted at 1:200 (4° overnight). 3, Secondary antibody was diluted at 1:200 (room temperature, 45 min).

