



Cleaved-Integrin α 5 HC (F42) rabbit pAb

Cat No.:ES5944

For research use only

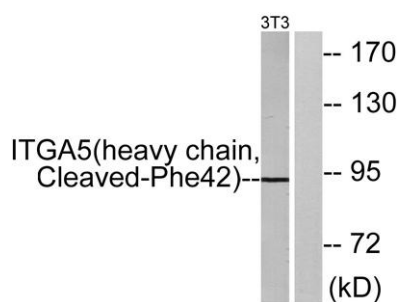
Overview

Product Name	Cleaved-Integrin α 5 HC (F42) rabbit pAb
Host species	Rabbit
Applications	WB;ELISA
Species Cross-Reactivity	Human;Mouse
Recommended dilutions	Western Blot: 1/500 - 1/2000. ELISA: 1/10000. Not yet tested in other applications.
Immunogen	The antiserum was produced against synthesized peptide derived from human ITGA5. AA range:23-72
Specificity	Cleaved-Integrin α 5 HC (F42) Polyclonal Antibody detects endogenous levels of fragment of activated Integrin α 5 HC protein resulting from cleavage adjacent to F42.
Formulation	Liquid in PBS containing 50% glycerol, 0.5% BSA and 0.02% sodium azide.
Storage	Store at -20°C. Avoid repeated freeze-thaw cycles.
Protein Name	Integrin alpha-5
Gene Name	ITGA5
Cellular localization	Membrane; Single-pass type I membrane protein. Cell junction, focal adhesion . Cell surface .
Purification	The antibody was affinity-purified from rabbit antiserum by affinity-chromatography using epitope-specific immunogen.
Clonality	Polyclonal
Concentration	1 mg/ml
Observed band	92kD
Human Gene ID	3678
Human Swiss-Prot Number	P08648
Alternative Names	ITGA5; FNRA; Integrin alpha-5; CD49 antigen-like family member E; Fibronectin receptor subunit alpha; Integrin alpha-F; VLA-5; CD antigen CD49e integrin subunit alpha 5(ITGA5) Homo sapiens
Background	The product of this gene belongs to the integrin alpha chain family. Integrins are heterodimeric





integral membrane proteins composed of an alpha subunit and a beta subunit that function in cell surface adhesion and signaling. The encoded preproprotein is proteolytically processed to generate light and heavy chains that comprise the alpha 5 subunit. This subunit associates with the beta 1 subunit to form a fibronectin receptor. This integrin may promote tumor invasion, and higher expression of this gene may be correlated with shorter survival time in lung cancer patients. Note that the integrin alpha 5 and integrin alpha V subunits are encoded by distinct genes. [provided by RefSeq, Oct 2015],



Western blot analysis of lysates from NIH/3T3 cells, treated with etoposide 25uM 24h, using ITGA5 (heavy chain, Cleaved-Phe42) Antibody. The lane on the right is blocked with the synthesized peptide.

