

IL-13R α 1 (phospho Tyr405) rabbit pAb

Cat No.:ES5896

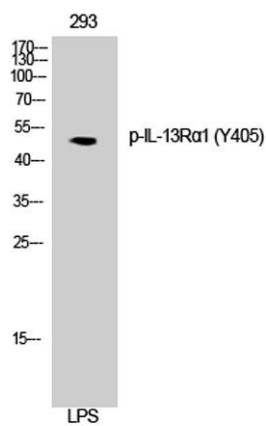
For research use only

Overview

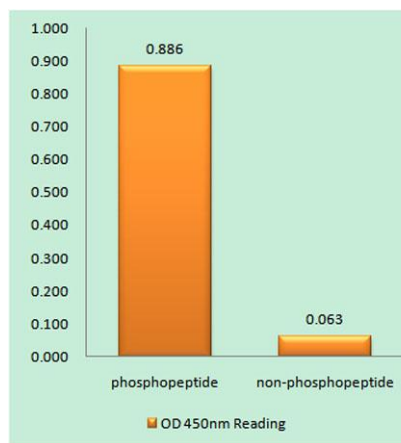
Product Name	IL-13R α 1 (phospho Tyr405) rabbit pAb
Host species	Rabbit
Applications	WB;IF;ELISA
Species Cross-Reactivity	Human;Mouse;Rat
Recommended dilutions	Western Blot: 1/500 - 1/2000. Immunofluorescence: 1/200 - 1/1000. ELISA: 1/10000. Not yet tested in other applications.
Immunogen	The antiserum was produced against synthesized peptide derived from human IL-13R alpha1 around the phosphorylation site of Tyr405. AA range:371-420
Specificity	Phospho-IL-13R α 1 (Y405) Polyclonal Antibody detects endogenous levels of IL-13R α 1 protein only when phosphorylated at Y405.
Formulation	Liquid in PBS containing 50% glycerol, 0.5% BSA and 0.02% sodium azide.
Storage	Store at -20°C. Avoid repeated freeze-thaw cycles.
Protein Name	Interleukin-13 receptor subunit alpha-1
Gene Name	IL13RA1
Cellular localization	Membrane; Single-pass type I membrane protein.
Purification	The antibody was affinity-purified from rabbit antiserum by affinity-chromatography using epitope-specific immunogen.
Clonality	Polyclonal
Concentration	1 mg/ml
Observed band	49kD
Human Gene ID	3597
Human Swiss-Prot Number	P78552
Alternative Names	IL13RA1; IL13R; IL13RA; Interleukin-13 receptor subunit alpha-1; IL-13 receptor subunit alpha-1; IL-13R subunit alpha-1; IL-13R-alpha-1; IL-13RA1; Cancer/testis antigen 19; CT19; CD antigen CD213a1
Background	The protein encoded by this gene is a subunit of the



interleukin 13 receptor. This subunit forms a receptor complex with IL4 receptor alpha, a subunit shared by IL13 and IL4 receptors. This subunit serves as a primary IL13-binding subunit of the IL13 receptor, and may also be a component of IL4 receptors. This protein has been shown to bind tyrosine kinase TYK2, and thus may mediate the signaling processes that lead to the activation of JAK1, STAT3 and STAT6 induced by IL13 and IL4. [provided by RefSeq, Jul 2008],



Western Blot analysis of 3T3 cells using Phospho-IL-13Rα1 (Y405) Polyclonal Antibody

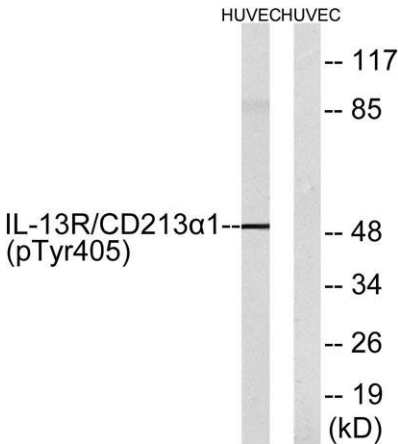
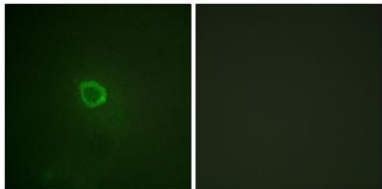


Enzyme-Linked Immunosorbent Assay (Phospho-ELISA) for Immunogen Phosphopeptide (Phospho-left) and Non-Phosphopeptide (Phospho-right), using IL-13R alpha1 (Phospho-Tyr405) Antibody





Immunofluorescence analysis of HepG2 cells, using IL-13R alpha1 (Phospho-Tyr405) Antibody. The picture on the right is blocked with the phospho peptide.



Western blot analysis of lysates from HUVEC cells treated with serum 20% 15', using IL-13R alpha1 (Phospho-Tyr405) Antibody. The lane on the right is blocked with the phospho peptide.

