



IKK β rabbit pAb

Cat No.:ES5867

For research use only

Overview

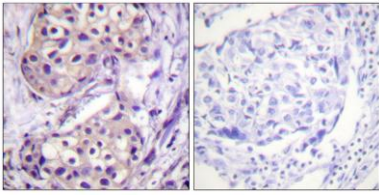
| | |
|---------------------------------|---|
| Product Name | IKK β rabbit pAb |
| Host species | Rabbit |
| Applications | WB;IHC;IF;ELISA |
| Species Cross-Reactivity | Human;Mouse;Rat |
| Recommended dilutions | Immunohistochemistry: 1/100 - 1/300. ELISA: 1/10000. Not yet tested in other applications. |
| Immunogen | The antiserum was produced against synthesized peptide derived from human IKK-beta. AA range:166-215 |
| Specificity | IKK β Polyclonal Antibody detects endogenous levels of IKK β protein. |
| Formulation | Liquid in PBS containing 50% glycerol, 0.5% BSA and 0.02% sodium azide. |
| Storage | Store at -20°C. Avoid repeated freeze-thaw cycles. |
| Protein Name | Inhibitor of nuclear factor kappa-B kinase subunit beta |
| Gene Name | IKBKB |
| Cellular localization | Cytoplasm . Nucleus . Membrane raft . Colocalized with DPP4 in membrane rafts. . |
| Purification | The antibody was affinity-purified from rabbit antiserum by affinity-chromatography using epitope-specific immunogen. |
| Clonality | Polyclonal |
| Concentration | 1 mg/ml |
| Observed band | 86kD |
| Human Gene ID | 3551 |
| Human Swiss-Prot Number | O14920 |
| Alternative Names | IKBKB; IKKB; Inhibitor of nuclear factor kappa-B kinase subunit beta; I-kappa-B-kinase beta; IKK-B; IKK-beta; IKBKB; I-kappa-B kinase 2; IKK2; Nuclear factor NF-kappa-B inhibitor kinase beta; NFKBIKB |
| Background | The protein encoded by this gene phosphorylates the inhibitor in the inhibitor/NF-kappa-B complex, |





causing dissociation of the inhibitor and activation of NF-kappa-B. The encoded protein itself is found in a complex of proteins. Several transcript variants, some protein-coding and some not, have been found for this gene. [provided by RefSeq, Sep 2011],

Immunohistochemistry analysis of paraffin-embedded human breast carcinoma tissue, using IKK-beta Antibody. The picture on the right is blocked with the synthesized peptide.



Immunohistochemical analysis of paraffin-embedded human brain. 1,primary Antibody was diluted at 1:200(4° overnight). 2, EDTA pH 9.0 was used for antigen retrieval 3 Reday to use Secondary antibody(catalog: RS0011) was used at 37°C, 30min

